

AUSTRALIAN AMALGAMATED TERMINALS PTY LTD (AAT)

BI-ANNUAL COMPLIANCE REPORT  
 DATE OF REPORT: 28th Feb, 2025  
 Port Kembla (NSW) & Fisherman Islands (QLD)  
 REPORT PERIOD: 1st Jul 2024 TO 31st Dec 2024

KPI	Port Kembla			Brisbane		
		Average time	Explanation		Average time	Explanation
<b>KPI 1 Truck Turnaround Time</b>  Average time spent at the terminal picking up or delivering cargo, measured from gate entry through to departure from terminal	<b>Quarter 3</b>			<b>Quarter 1</b>		
	Automobiles - Qube	41 mins		Automobiles - Qube	33 mins	
	Automobiles - Linx	39 mins		Automobiles - Linx	26 mins	
	Breakbulk - Qube	1 hr 08 mins		Automobiles - TML	56 mins	
	Breakbulk - Linx	1 hr 01 mins		Breakbulk - Qube	1 hr 5 mins	
				Breakbulk - Linx	1 hr 2 mins	
				Breakbulk - TML	58 mins	
	<b>Quarter 4</b>			<b>Quarter 2</b>		
	Automobiles - Qube	42 mins		Automobiles - Qube	32 mins	
	Automobiles - Linx	39 mins		Automobiles - Linx	28 mins	
	Breakbulk - Qube	58 mins		Automobiles - TML	40 mins	
	Breakbulk - Linx	57 mins		Breakbulk - Qube	1hr 02 mins	
				Breakbulk - Linx	1hr 06 mins	
				Breakbulk - TML	59 mins	
<b>KPI 2 Yard Dwell Time - Imports</b>	<b>Quarter 3</b>			<b>Quarter 1</b>		
	Automobiles - Qube	63 hrs 28 mins		Automobiles - Qube	77 hrs 08 mins	
	Automobiles - Linx	55 hrs 47 mins		Automobiles - Linx	65 hrs 10 mins	
	Breakbulk - Qube	95 hrs 13 mins		Automobiles - TML	0 mins	N/A
	Breakbulk - Linx	44 hrs 38 mins		Breakbulk - Qube	49 hrs 53 mins	
				Breakbulk - Linx	55 hrs 03 mins	
				Breakbulk - TML	75 hrs 47 mins	
	<b>Quarter 4</b>			<b>Quarter 2</b>		
	Automobiles - Qube	49 hrs 48 mins		Automobiles - Qube	33 hrs 55 mins	
	Automobiles - Linx	48 hrs 33 mins		Automobiles - Linx	33 hrs 56 mins	
	Breakbulk - Qube	97 hrs 33 mins		Automobiles - TML	0 mins	N/A
	Breakbulk - Linx	61 hrs 32 mins		Breakbulk - Qube	66 hrs 56 mins	
				Breakbulk - Linx	47 hrs 19 mins	
				Breakbulk - TML	85 hrs 47 mins	
<b>KPI 3 Yard Dwell Time - Exports</b>  Average time export cargo units stayed at the designated cargo pick-up area of the terminal waiting to be loaded onto a vessel, once the cargo is ready to be loaded.	<b>Quarter 3</b>			<b>Quarter 1</b>		
	Automobiles - Qube	174 hrs 21 mins		Automobiles - Qube	186 hrs 13 mins	
	Automobiles - Linx	152 hrs 43 mins		Automobiles - Linx	149 hrs 58 mins	
	Breakbulk - Qube	235 hrs 30 mins		Automobiles - TML	141 hrs 48 mins	
			Linx handle USA bound export cargo for Bluescope as NSW Ports is rebuilding 2 Bluescope wharves. AAT has arranged directly with Bluescope to accept early receipts to assist with this export bound cargo which is reflected in the high Export Dwell time.			
	Breakbulk - Linx	639 hrs 30 mins		Breakbulk - Qube	166 hrs 11 mins	
				Breakbulk - Linx	169 hrs 55 mins	
				Breakbulk - TML	185 hrs 50 mins	
	<b>Quarter 4</b>			<b>Quarter 2</b>		
	Automobiles - Qube	233 hrs 22 mins		Automobiles - Qube	272 hrs 53 mins	
	Automobiles - Linx	188 hrs 36 mins		Automobiles - Linx	285 hrs 35 mins	
	Breakbulk - Qube	309 hrs 15 mins		Automobiles - TML	206 hrs 53 mins	
			Linx handle USA bound export cargo for Bluescope as NSW Ports is rebuilding 2 Bluescope wharves. AAT has arranged directly with Bluescope to accept early receipts to assist with this export bound cargo which is reflected in the high Export Dwell time.			
	Breakbulk - Linx	640 hrs 32 mins		Breakbulk - Qube	213 hrs 50 mins	
				Breakbulk - Linx	197 hrs 19 mins	
			Breakbulk - TML	179 hrs 16 mins		
<b>KPI 4 Berthing Allocation Changes</b>  Number of incidents where there was a delay in start of stevedoring operations due to deviation between planned allocation of berth and actual allocation, where AAT was responsible for such deviation.	<b>Quarter 3</b>			<b>Quarter 1</b>		
	Qube	Zero		Qube	Zero	
	Linx	Zero		Linx	Zero	
				TML	Zero	
	<b>Quarter 4</b>			<b>Quarter 2</b>		
	Qube	Zero		Qube	Zero	
	Linx	Zero		Linx	Zero	
				TML	Zero	
<b>KPI 5 Mooring Services</b>  Number of incidents where there was a delay in the mooring of vessels due to a deviation between planned berth allocation and actual allocation, where AAT was responsible for such deviation.	<b>Quarter 3</b>			<b>Quarter 1</b>		
	Qube	Zero		Qube	Zero	
	Linx	Zero		Linx	Zero	
				TML	Zero	
	<b>Quarter 4</b>			<b>Quarter 2</b>		
	Qube	Zero		Qube	Zero	
	Linx	Zero		Linx	Zero	
				TML	Zero	
<b>KPI 6 Allocation of first point of rest area</b>  Data showing, for each cargo shipment:	Explanation			Explanation		
	Refer Attachment A			Refer Attachment A		

a) berth allocated to vessel b) allocated storage area in the Terminal Layout Plan for the cargo's first point of						
This data can be set out in an Attachment to this Compliance Report						
KPI 7 Equipment Availability  Number of deviations between AAT equipment requested by stevedore or by shipping line and actual machinery provided (including standard of equipment, age, type and capacity)		Number of Incidents	Explanation		Number of Incidents	Explanation
	Quarter 3			Quarter 1		
	Qube	Zero		Qube	Zero	
	Linx	Zero		Linx	Zero	
				TML	Zero	
	Quarter 4			Quarter 2		
	Qube	Zero		Qube	Zero	
	Linx	Zero		Linx	Zero	
				TML	Zero	
KPI 8 Mechanical Support  Average time lost in excess of one hour due to failure of AAT in providing mechanical breakdown support, reported from the time Mechanical Engineer officially notified to the time the issue was resolved.		Average time lost	Explanation		Average time lost	Explanation
	Quarter 3			Quarter 1		
	Qube	Zero		Qube	Zero	
	Linx	Zero		Linx	Zero	
				TML	Zero	
	Quarter 4			Quarter 2		
	Qube	Zero		Qube	5 hrs	
	Linx	Zero		Linx	Zero	
				TML	Zero	
KPI 9 Cargo dwell time over free time/long terms storage  Time cargo units stay over free time, excluding Customs, DAFF and customer hold.		Units/percentage	Explanation		Units/percentage	Explanation
	Quarter 3	Services to Qube		Quarter 1	Services to Qube	
	Services to Qube			Services to Qube		
	Total Cargo Units	67,326		Total Cargo Units	65,071	
	Units staying over free time	8,666		Units staying over free time	6,076	
	Units over free time due Customs/Daff or customer	86		Units over free time due Customs/Daff or customer	49	
	Units staying over free time excluding Customs etc. as percentage of total units	13%		Units staying over free time excluding Customs etc. as percentage of total units	9%	
	Services to Linx			Services to Linx		
	Total Cargo Units	26,357		Total Cargo Units	38,750	
	Units staying over free time	4,058		Units staying over free time	4,567	
	Units over free time due Customs/Daff or customs	20		Units over free time due Customs/Daff or customer	81	
	Units staying over free time excluding Customs etc. as percentage of total units	15%		Units staying over free time excluding Customs etc. as percentage of total units	12%	
	Quarter 4			Services to TML		
	Services to Qube			Services to Qube		
	Total Cargo Units	50,578		Total Cargo Units	4,474	
	Units staying over free time	7,457		Units staying over free time	13	
	Units over free time due Customs/Daff or customer	145		Units over free time due Customs/Daff or customer	8	
	Units staying over free time excluding Customs etc. as percentage of total units	14%		Units staying over free time excluding Customs etc. as percentage of total units	0%	
	Services to Linx			Services to Linx		
	Total Cargo Units	35,066		Services to Qube		
	Units staying over free time	6,221		Total Cargo Units	47,179	
	Units over free time due Customs/Daff or customer	34		Units staying over free time	1,681	
	Units staying over free time excluding Customs etc. as percentage of total units	18%		Units over free time due Customs/Daff or customer	29	
				Units staying over free time excluding Customs etc. as percentage of total units	4%	
				Services to Linx		
				Total Cargo Units	42,148	
				Units staying over free time	3,507	
				Units over free time due Customs/Daff or customer	10	
				Units staying over free time excluding Customs etc. as percentage of total units	8%	
				Services to TML		
			Total Cargo Units	7,325		
			Units staying over free time	8		
			Units over free time due Customs/Daff or customer	4		
			Units staying over free time excluding Customs etc. as percentage of total units	0%		
KPI 10 Confidentiality and ring-fencing  Number of complaints received by AAT concerning non-compliance with Clause 6 of the Undertaking  Number of instance of breaches of Clause		Number of Complaints	Explanation		Number of Complaints	Explanation
	Quarter 3			Quarter 1		
	Complaints for Non-Compliance with Clause 6			Complaints for Non-Compliance with Clause 6		
	Services to Qube	Zero		Services to Qube	Zero	
	Services to Linx	Zero		Services to Linx	Zero	
	Breaches of Clause 6 Clause 6			Services to TML	Zero	
	Services to Qube	Zero		Breaches of Clause 6 Clause 6		
	Services to Linx	Zero		Services to Qube	Zero	
				Services to Linx	Zero	

Number of instance of breaches of Clause 6  AAT's response to the complaints and/or breaches	<b>Quarter 4</b>			Services to TML	<b>Zero</b>	
	Complaints for Non-Compliance with Clause 6			<b>Quarter 2</b>		
	Services to Qube	<b>Zero</b>		Complaints for Non-Compliance with Clause 6		
	Services to Linx	<b>Zero</b>		Services to Qube	<b>Zero</b>	
	Breaches of Clause 6 Clause 6			Services to Linx	<b>Zero</b>	
	Services to Qube	<b>Zero</b>		Services to TML	<b>Zero</b>	
	Services to Linx	<b>Zero</b>		Breaches of Clause 6 Clause 6		
				Services to Qube	<b>Zero</b>	
				Services to Linx	<b>Zero</b>	
				Services to TML	<b>Zero</b>	
<b>KPI 11 Complaints</b>  Number of complaints raised under the Price Dispute Resolution Process and the Non-Price Resolution Process under the Undertaking		Number of Complaints	Explanation		Number of Complaints	Explanation
	<b>Quarter 3</b>			<b>Quarter 1</b>		
	Complaints Under Price and non-Price Dispute Resolution Process			Complaints Under Price and non-Price Dispute Resolution Process		
	Services to Qube	<b>Zero</b>		Services to Qube	<b>Zero</b>	
	Services to Linx	<b>Zero</b>		Services to Linx	<b>Zero</b>	
	Details of complaint and outcome	<b>Zero</b>		Services to TML	<b>Zero</b>	
				Details of complaint and outcome	<b>Zero</b>	
	<b>Quarter 4</b>					
	Complaints Under Price and non-Price Dispute Resolution Process			<b>Quarter 2</b>		
	Services to Qube	<b>Zero</b>		Complaints Under Price and non-Price Dispute Resolution Process		
Services to Linx	<b>Zero</b>		Services to Qube	<b>Zero</b>		
Details of complaint and outcome	<b>Zero</b>		Services to Linx	<b>Zero</b>		
			Services to TML	<b>Zero</b>		
			Details of complaint and outcome	<b>Zero</b>		

**PART B: TERMINAL LAYOUT PLAN FOR EACH TERMINAL**

See attachment Part B

**PART C: TERMINAL USERS IN WHICH QUBE OR A QUBE RELATED ENTITY HAS AN INTEREST**

See attachment Part C

**AUSTRALIAN AMALGAMATED TERMINALS PTY LTD (AAT)**

**MELBOURNE BI-ANNUAL COMPLIANCE REPORT**

**DATE OF REPORT: 28th February, 2025**

**REPORT PERIOD: 1st Jul 2024 TO 31st Dec 2024**

KPI	Melbourne		
<p align="center"><b>KPI 1 Truck Turnaround Time</b></p> <p>Average time spent at the terminal picking up or delivering cargo, measured from gate entry through to departure from terminal</p>		Average time	Explanation
	<b>QTR 3 &amp; 4</b>		
	Automobiles - Qube	<b>18 mins</b>	Qube only handled 2 vehicles in the reporting period leading to short TTT
	Automobiles - Linx	<b>38 mins</b>	
	Breakbulk - Qube	<b>44 mins</b>	
	Breakbulk - Linx	<b>26 mins</b>	
<p align="center"><b>KPI 2 Yard Dwell Time - Imports</b></p>		Average time	Explanation
	<b>Quarter 3 &amp; 4</b>		
	Automobiles - Qube	<b>0 mins</b>	Qube handled a very small number of vehicles which had no dwell time
	Automobiles - Linx	<b>76hrs 25 mins</b>	Only 2 vessels were handled by Linx in the reporting period
	Breakbulk - Qube	<b>210 hrs 31 mins</b>	Qube handled a vast majority of BBLK cargo at the terminal
	Breakbulk - Linx	<b>17hrs 29 mins</b>	Linx only handled 2 pieces of BBLK cargo at APD during the reporting period
<p align="center"><b>KPI 3 Yard Dwell Time - Exports</b></p> <p>Average time export cargo units stayed at the designated cargo pick-up area of the terminal waiting to be loaded onto a vessel, once the cargo is ready to be loaded.</p>		Average time	Explanation
	<b>Quarter 3 &amp; 4</b>		
	Automobiles - Qube	<b>0 mins</b>	There were no export vehicles handled in the reporting period
	Automobiles - Linx	<b>0 mins</b>	There were no export vehicles handled in the reporting period
	Breakbulk - Qube	<b>719hrs 19mins</b>	Qube handled large qts of steel export cargo that remained in the terminal for an extended period due to slow handling requirements

	Breakbulk - Linx	2hrs 3 mins	Linx only handled a small number of BBLK cargo items that were loaded onto PCC vessel resulting in a short Export Dwell time.
<b>KPI 4 Berthing Allocation Changes</b> Number of incidents where there was a delay in start of stevedoring operations due to deviation between planned allocation of berth and actual allocation,		Number of Incidents	Explanation
	<b>Quarter 3 &amp; 4</b>		
	Qube	0	
	Linx	0	
<b>KPI 5 Mooring Services</b> Number of incidents where there was a delay in the mooring of vessels due to a deviation between planned berth allocation and actual allocation, where		Number of Incidents	Explanation
	<b>Quarter 3 &amp; 4</b>		
	Qube	0	
	Linx	0	
<b>KPI 6 Allocation of first point of rest area</b>  Data showing, for each cargo shipment:  a) berth allocated to vessel  b) allocated storage area in the Terminal Layout Plan for the cargo's first point of  <b>This data can be set out in an Attachment to this Compliance Report</b>			Explanation
		Refer Attachment A	
<b>KPI 7 Equipment Availability</b> Number of deviations between AAT equipment requested by stevedore or by shipping line and actual machinery provided (including standard of		Number of Incidents	Explanation
	<b>QTR 3 &amp; 4</b>		
	Qube	0	
	Linx	0	
<b>KPI 8 Mechanical Support</b> Average time lost in excess of one hour due to failure of AAT in providing mechanical breakdown support, reported from the time Mechanical Engineer		Average time lost	Explanation
	<b>QTR 3 &amp; 4</b>		
	Qube	0	
	Linx	0	
<b>KPI 9 Cargo dwell time over free time/long terms storage</b>		Units/percentage	Explanation
	<b>QTR 3 &amp; 4</b>	Services to Qube	
	Services to Qube		
	Total Cargo Units	56,183	
	Units staying over free time	4,612	

Time cargo units stay over free time, excluding Customs, DAFF and customer hold.	Units over free time due Customs/Daff or customer	0	
	Units staying over free time excluding Customs etc. as percentage of total units	8%	
	<b>Services to Linx</b>		
	Total Cargo Units	1,746	
	Units staying over free time	25	
	Units over free time due Customs/Daff or customs	0	
	Units staying over free time excluding Customs etc. as percentage of total units	1%	
<b>KPI 10 Confidentiality and ring-fencing</b>  Number of complaints received by AAT concerning non-compliance with Clause 6 of the Undertaking  Number of instance of breaches of Clause 6			
		Number of Complaints	Explanation
	<b>QTR 3 &amp; 4</b>		
	Complaints for Non-Compliance with Clause 6		
	Services to Qube	0	
	Services to Linx	0	
	Breaches of Clause 6 Clause 6		
	Services to Qube	0	
	Services to Linx	0	
<b>KPI 11 Complaints</b>  Number of complaints raised under the Price Dispute Resolution Process and the Non-Price Resolution Process under the Undertaking			
		Number of Complaints	Explanation
	<b>QTR 3 &amp; 4</b>		
	Complaints Under Price and non-Price Dispute Resolution Process		
	Services to Qube	0	
	Services to Linx	0	
	Details of complaint and outcome	0	

Attachment A

## **KPI 6**

Allocation of first point of rest

Port Kembla

Jul 1 – Dec 31, 2024

DATE	STEVE-DORE	VESSEL	VOYAGE	STARTING SHIFT	BERTH #	BERTH DELAY	LAYDOWN	MACHINERY REQUEST RECEIVED	MACHINERY REQUEST FILLED	MACHINERY ISSUES	NOTES
1/07/2024	QUBE	IVORY ARROW	156	EVENING	107	N	ESHED EAVES, GSHED EAVES, A BLOCK, C BLOCK, O BOCK, Q BLOCK AND ESHED	Y	Y	N	
2/07/2024	LINX	MERCURY LEADER	062	DAY	105	N	D BLOCK, F BLOCK, H BLOCK AND N BLOCK	Y	Y	N	VESSEL BERTHED AT 105 DUE TO 106 AND 107 BEING OCCUPIED.
3/07/2024	QUBE	VIKING PAGLIA	V2462	EVENING	105	N	D BLOCK, H BLOCK, R BLOCK AND N BLOCK	Y	Y	N	VESSEL BERTHED AT 105 DUE TO 106 AND 107 BEING OCCUPIED.
4/07/2024	QUBE	DUGONG ACE	047	DAY	107	N	ESHED EAVES, GSHED EAVES, 107CON, C BLOCK, Q BLOCK AND ESHED	Y	Y	N	
6/07/2024	QUBE	TRANS FUTURE 6	152	DAY	105	N	D BLOCK, F BLOCK, H BLOCK AND N BLOCK	Y	Y	N	VESSEL BERTHED AT 105 DUE TO 106 AND 107 BEING OCCUPIED.
6/07/2024	QUBE	TYSLA	EE410	EVENING	107	N	ESHED EAVES, GSHED EAVES, 107CON, C BLOCK, Q BLOCK AND ESHED	Y	Y	N	
7/07/2024	QUBE	MV EASTBOURNE	24089	NIGHT	103	Y	DIRECT TO TRUCK	Y	Y	N	BERTHING DELAY DUE TO BERTH BEING OCCUPIED
7/07/2024	QUBE	MORNING LUCY	EF407	EVENING	107	N	107STRG, A BLOCK, O BLOCK AND ESHED	Y	Y	N	C BLOCK NOT UTILISED AS FULL
8/07/2024	QUBE	BBC HONG KONG	5011	DAY	105	Y	105 STRG	Y	Y	N	VESSEL BERTHED AT 105 DUE TO 106 AND 107 BEING OCCUPIED. BERTHING DELAY DUE TO BERTH BEING OCCUPIED
9/07/2024	QUBE	NABUCCO	EE411	NIGHT	107	N	ESHED EAVES, GSHED EAVES, 107CON, A BLOCK, C BLOCK, Q BLOCK AND ESHED	Y	Y	N	
12/07/2024	QUBE	AFRICAN PELICAN	24073	NIGHT	103	N	DIRECT TO TRUCK	Y	Y	N	
12/07/2024	QUBE	TORINO	EF408	EVENING	106	N	H BLOCK AND N BLOCK	Y	Y	N	
12/07/2024	QUBE	GENIUS HIGHWAY	073	DAY	105	N	F BLOCK AND N BLOCK	Y	Y	N	VESSEL BERTHED AT 105 DUE TO 106 AND 107 BEING OCCUPIED. H BLOCK NOT UTILISED AS TORINO DISCHARGED INTO H BLOCK
13/07/2024	LINX	HOEGH BERLIN	126	DAY	107	N	ESHED EAVES, 107CON, C BLOCK, Q BLOCK AND ESHED	Y	Y	N	
14/07/2024	QUBE	HORIZON HIGHWAY	080	NIGHT	106	N	D BLOCK, H BLOCK AND N BLOCK	Y	Y	N	
14/07/2024	QUBE	RCC ASIA	017	DAY	107	Y	GSHED EAVES, 107CON, A BLOCK, C BLOK, O BLOCK AND ESHED	Y	Y	N	BERTHING DELAY DUE TO ALL BERTHS BEING OCCUPIED
14/07/2024	LINX	KARIYUSHI LEADER	074	EVENING	105	N	B BLOCK, D BLOCK, H BLOCK AND R BLOCK	Y	Y	N	VESSEL BERTHED AT 105 DUE TO 106 AND 107 BEING OCCUPIED.
15/07/2024	LINX	CSAV RIO NEVADO	24RN4A	EVENING	107	N	A BLOCK AND C BLOCK	Y	Y	N	
16/07/2024	QUBE	MORNING CRYSTAL	V2463	DAY	106	N	B BLOCK, D BLOCK, F BLOCK, H BLOCK AND N BLOCK	Y	Y	N	
17/07/2024	QUBE	GLOVIS COMET	085	DAY	107	N	107CON, A BLOCK, C BLOCK, O BLOCK AND Q BLOCK	Y	Y	N	
17/07/2024	QUBE	GRACIOUS ACE	098	EVENING	106	N	D BLOCK, F BLOCK, H BLOCK AND N BLOCK	Y	Y	N	
18/07/2024	LINX	POWAN	2404	DAY	105	N	LOAD STEEL FROM GEAR STORE	Y	Y	N	
18/07/2024	QUBE	TRANS FUTURE 5	154	DAY	107	Y	107CON, A BLOCK, C BLOCK, Q BLOCK AND ESHED	Y	Y	N	BERTHING DELAY DUE TO ALL BERTHS BEING OCCUPIED
18/07/2024	QUBE	INCE BEYLERBEYI	0724	EVENING	103	Y	DIRECT TO TRUCK	Y	Y	N	BERTHING DELAY DUE TO BERTH BEING OCCUPIED
19/07/2024	QUBE	AUDREY SW	2401	NIGHT	106	Y	L BLOCK AND P SHED	Y	Y	N	BERTHING DELAY DUE TO ALL BERTHS BEING OCCUPIED
22/07/2024	LINX	HOEGH TROTTER	42	EVENING	107	N	ESHED EAVES, 107CON, A BLOCK, C BLOCK, D BLOCK AND ESHED	Y	Y	N	D BLOCK UTILISED AS NOT ENOUGH SPACE IN C BLOCK
23/07/2024	LINX	HARVEST LEADER	080	DAY	106	N	F BLOCK, H BLOCK AND L BLOCK	Y	Y	N	
23/07/2024	QUBE	UM IMABARI	24097	DAY	103	Y	DIRECT TO TRUCK	Y	Y	N	BERTHING DELAY DUE TO BERTH BEING OCCUPIED
25/07/2024	QUBE	TONSBERG	EE412	NIGHT	107	N	ESHED EAVES, G SHED EAVES, C BLOCK AND ESHED	Y	Y	N	
25/07/2024	QUBE	AZUL ACE	025	EVENING	106	N	D BLOCK, F BLOCK, H BLOCK, M BLOCK AND PSHED	Y	Y	N	
26/07/2024	QUBE	GLOVIS CROWN	003	NIGHT	105	N	B BLOCK, D BLOCK, R BLOCK, PSHED AND N BLOCK	Y	Y	N	VESSEL BERTHED AT 105 DUE TO 106 AND 107 BEING OCCUPIED. H BLOCK NOT UTILISED AS AZUL ACE DISCHARGED INTO H BLOCK
26/07/2024	QUBE	ANIARA	EF409	EVENING	107	N	ESHED EAVES, GSHED EAVES, C BLOCK, Q BLOCK AND ESHED	Y	Y	N	
29/07/2024	LINX	GRAND QUEST	24GQ05	DAY	106	N	F BLOCK AND H BLOCK	Y	Y	N	

Legend - Berth # and Laydown

Primary
Secondary
Tertiary

	QUBE	LINX
TOTAL VESSELS FOR MONTH	25	8
GREEN BERTH	20	6
ORANGE BERTH	5	2
RED BERTH	0	0
GREEN LAYDOWN	22	7
ORANGE LAYDOWN	3	1
RED LAYDOWN	0	0

NUMBER OF BERTHING DELAYS	7	0	SEE ATTACHED SHEETS SHOWING BERTH AND CONGESTION DELAYS
NUMBER OF MACHINERY ISSUES/REQUESTS NOT MET	0	0	



PK AUG 2024

DATE	STEVE-DORE	VESSEL	VOYAGE	STARTING SHIFT	BERTH #	BERTH DELAY	LAYDOWN	MACHINERY REQUEST RECEIVED	MACHINERY REQUEST FILLED	MACHINERY ISSUES	NOTES
2/08/2024	QUBE	RCC TIANJIN	013	DAY	107	N	C BLOCK AND Q BLOCK	Y	Y	N	
3/08/2024	LINX	HERCULES LEADER	102	DAY	106	N	F BLOCK, H BLOCK, L BLOCK AND PSHED	Y	Y	N	
3/08/2024	QUBE	JASPER ARROW	133	DAY	107	N	E SHED EAVES, A BLOCK, C BLOCK, O BLOCK, Q BLOCK AND ESHED	Y	Y	N	
4/08/2024	LINX	HOEGH LONDON	110	DAY	107	N	GSHEE EAVES, 107STR, A BLOCK, Q BLOCK AND ESHED	Y	Y	N	C BLOCK NOT UTILISED AS FULL
4/08/2024	QUBE	VIKING DIAMOND	061	EVENING	106	N	F BLOCK, H BLOCK, I BLOCK, M BLOCK AND PSHED	Y	Y	N	
4/08/2024	QUBE	VIKING PASSAMA	V2464	NIGHT	105	N	D BLOCK, F BLOCK, H BLOCK, M BLOCK AND N BLOCK	Y	Y	N	VESSEL BERTHED AT 105 DUE TO 106 AND 107 BEING OCCUPIED.
5/08/2024	QUBE	GRAND CHAMPION	003	DAY	106	N	B BLOCK, H BLOCK, R BLOCK, L BLOCK AND M BLOCK	Y	Y	N	
5/08/2024	LINX	RHEA LEADER	125	DAY	107	N	107CON, A BLOCK, B BLOCK, D BLOCK AND ESHED	Y	Y	N	B AND D BLOCKS UTILISED AS NOT ENOUGH SPACE IN C BLOCK H BLOCK NOT UTILISED AS NOT ENOUGH SPACE
6/08/2024	QUBE	TRANS FUTURE 7	153	DAY	106	N	B BLOCK, D BLOCK, F BLOCK, K BLOCK, L BLOCK AND PSHED	Y	Y	N	
6/08/2024	QUBE	DARYA SITA	0824	EVENING	103	N	DIRECT TO TRUCK	Y	Y	N	
7/08/2024	QUBE	PAN RUBY	24090	DAY	105	N	DIRECT TO TRUCK	Y	Y	N	
7/08/2024	QUBE	SALVIA ACE	158	DAY	107	N	E SHED EAVES, A BLOCK, C BLOCK, O BLOCK, Q BLOCK AND ESHED	Y	Y	N	
7/08/2024	QUBE	TIANJIN HIGHWAY	164	EVENING	106	N	F BLOCK, H BLOCK, M BLOCK AND PSHED	Y	Y	N	
8/08/2024	QUBE	THEBEN	EE413	DAY	107	N	ESHED EAVES, G SHED EAVES, 107CON, 107STR, A BLOCK, C BLOCK, Q BLOCK AND ESHED	Y	Y	N	
9/08/2024	QUBE	GLOVIS SILVER	001	NIGHT	107	N	A BLOCK, C BLOCK, O BLOCK AND Q BLOCK	Y	Y	N	
10/08/2024	QUBE	AAL HONG KONG	24007	NIGHT	106	N	I BLOCK AND G SHED	Y	Y	N	
11/08/2024	LINX	HOEGH TRAPPER	46	NIGHT	107	N	ESHED EAVES, G SHED EAVES, C BLOCK, D BLOCK, O BLOCK AND ESHED	Y	Y	N	D BLOCK UTILISED AS NOT ENOUGH SPACE IN C BLOCK
11/08/2024	LINX	CANOPUS LEADER	198	NIGHT	106	N	F BLOCK AND H BLOCK	Y	Y	N	
12/08/2024	QUBE	MORNING CHERRY	V2465	DAY	107	N	107STR, A BLOCK, B BLOCK, Q BLOCK, D BLOCK AND ESHED	Y	Y	N	B & D BLOCK UTILISED AS NOT ENOUGH SPACE IN C BLOCK
12/08/2024	QUBE	AH BREMEN	0824	NIGHT	103	Y	DIRECT TO TRUCK	Y	Y	N	
13/08/2024	LINX	IRIS LEADER	066	EVENING	106	N	D BLOCK, F BLOCK, H BLOCK, M BLOCK AND PSHED	Y	Y	N	
14/08/2024	QUBE	MORNING LISA	EF410	EVENING	107	N	ESHED EAVES, GSHED EAVES, Q BLOCK AND ESHED	Y	Y	N	
15/08/2024	QUBE	IVORY ARROW	157	EVENING	106	N	F BLOCK, H BLOCK AND N BLOCK	Y	Y	N	
16/08/2024	QUBE	SKYLINE	001	DAY	107	N	LOAD ONLY	Y	Y	N	
16/08/2024	QUBE	ORCHID ACE	141	EVENING	105	N	F BLOCK, H BLOCK, R BLOCK AND N BLOCK	Y	Y	N	VESSEL BERTHED AT 105 DUE TO 106 AND 107 BEING OCCUPIED.
17/08/2024	QUBE	NEW CENTURY 2	189	DAY	106	N	D BLOCK, F BLOCK AND H BLOCK	Y	Y	N	
17/08/2024	QUBE	BERGAMOT ACE	139	EVENING	106	N	B BLOCK, D BLOCK AND N BLOCK	Y	Y	N	B & D BLOCK UTILISED AS NOT ENOUGH SPACE IN H BLOCK
18/08/2024	QUBE	BUNUN LEADER	2401	DAY	106	N	I BLOCK, L BLOCK, M BLOCK, G SHED AND PSHED	Y	Y	N	
19/08/2024	LINX	KARIYUSHI LEADER	075	DAY	107	N	ESHED EAVES, C BLOCK, Q BLOCK AND ESHED	Y	Y	N	
19/08/2024	QUBE	GRAND LEGACY	006	EVENING	105	Y	D BLOCK, F BLOCK, H BLOCK AND N BLOCK	Y	Y	N	VESSEL BERTHED AT 105 DUE TO 106 AND 107 BEING OCCUPIED.
20/08/2024	QUBE	SHANGHAI HIGHWAY	175	DAY	107	N	C BLOCK AND O BLOCK	Y	Y	N	
20/08/2024	QUBE	K.ASIAN BEAUTY	001	EVENING	105	Y	D BLOCK, F BLOCK AND H BLOCK	Y	Y	N	VESSEL BERTHED AT 105 DUE TO 106 AND 107 BEING OCCUPIED.
21/08/2024	LINX	HOEGH TOKYO	113	DAY	107	N	ESHED EAVES, A BLOCK, O BLOCK, Q BLOCK AND ESHED	Y	Y	N	
21/08/2024	QUBE	ARETI	0824	NIGHT	103	Y	DIRECT TO TRUCK	Y	Y	N	
22/08/2024	QUBE	DUGONG ACE	048	DAY	105	N	F BLOCK, H BLOCK AND N BLOCK	Y	Y	N	VESSEL BERTHED AT 105 DUE TO 106 AND 107 BEING OCCUPIED.
23/08/2024	QUBE	AAL FREMANTLE	24008	DAY	105	Y	K BLOCK, M BLOCK AND N BLOCK	Y	Y	N	VESSEL BERTHED AT 105 DUE TO 106 AND 107 BEING OCCUPIED.
23/08/2024	LINX	SUN UNITY	024	EVENING	106	N	GSHEE AND L BLOCK	Y	Y	N	
23/08/2024	LINX	CSAV RIO NEVADO	24RN05	EVENING	107	N	C BLOCK	Y	Y	N	
24/08/2024	QUBE	AFRICAN LORIKEET	24101	EVENING	103	Y	DIRECT TO TRUCK	Y	Y	N	
24/08/2024	LINX	NEPTUNE LEADER	133	EVENING	107	N	ESHED EAVES, C BLOCK, Q BLOCK AND ESHED	Y	Y	N	
25/08/2024	QUBE	PAGANELLA	V2466	DAY	106	N	F BLOCK, H BLOCK, I BLOCK, L BLOCK AND N BLOCK	Y	Y	N	
25/08/2024	QUBE	MAPLE FORTUNE	0824	NIGHT	103	Y	DIRECT TO TRUCK	Y	Y	N	
27/08/2024	LINX	HOEGH SHANGHAI	113	DAY	107	N	E SHED EAVES, 107CON, A BLOCK, C BLOCK, O BLOCK, Q BLOCK AND ESHED	Y	Y	N	
28/08/2024	LINX	BBC MARS	51	EVENING	106	Y	LOAD ONLY	Y	Y	N	
28/08/2024	QUBE	TS INDEX	V5	EVENING	103	N	DIRECT TO TRUCK	Y	Y	N	
30/08/2024	QUBE	TARIFA	EF411	DAY	107	Y	ESHED EAVES, GSHED EAVES, 107CON, C BLOCK, Q BLOCK AND ESHED	Y	Y	N	
31/08/2024	QUBE	AAL BANGKOK	24008	DAY	107	N	ESHED AND GSHED	Y	Y	N	

Legend - Berth # and Laydown

Primary
Secondary
Tertiary

	QUBE	LINX
TOTAL VESSELS FOR MONTH	34	13
GREEN BERTH	28	13
ORANGE BERTH	6	0
RED BERTH	0	0
GREEN LAYDOWN	31	10
ORANGE LAYDOWN	3	3
RED LAYDOWN	0	0

NUMBER OF BERTHING DELAYS 9 0  
 NUMBER OF MACHINERY ISSUES/REQUESTS NOT MET 0 0

SEE ATTACHED SHEETS SHOWING BERTH AND CONGESTION DELAYS

PK Sep 2024

DATE	STEVE-DORE	VESSEL	VOYAGE	STARTING SHIFT	BERTH #	BERTH DELAY	LAYDOWN	MACHINERY REQUEST RECEIVED	MACHINERY REQUEST FILLED	MACHINERY ISSUES
1/09/2024	QUBE	NIAGRA HIGHWAY	042	DAY	105	N	F BLOCK AND H BLOCK	Y	Y	N
2/09/2024	QUBE	RCC ASIA	018	NIGHT	105	N	F BLOCK AND N BLOCK	Y	Y	N
3/09/2024	LINX	APHRODITE LEADER	048	DAY	107	N	C BLOCK	Y	Y	N
5/09/2024	QUBE	TRANS FUTURE 6	153	DAY	107	N	C BLOCK, O BLOCK AND Q BLOCK	Y	Y	N
5/09/2024	QUBE	GLOVIS COMET	086	NIGHT	106	N	F BLOCK AND H BLOCK	Y	Y	N
7/09/2024	QUBE	IZANAGI HARMONY	2402	DAY	106	N	I BLOCK, K BLOCK, L BLOCK AND PSUED	Y	Y	N
9/09/2024	LINX	GRAND QUEST	24GQ06	DAY	107	N	C BLOCK	Y	Y	N
9/09/2024	QUBE	PROMINENT ACE	169	EVENING	105	N	F BLOCK, H BLOCK AND N BLOCK	Y	Y	N
10/09/2024	QUBE	TAMERLANE	EE414.	NIGHT	107	N	ESHED EAVES, 107CON, O BLOCK, Q BLOCK AND ESHED	Y	Y	N
10/09/2024	QUBE	TURANDOT	V2467	EVENING	106	Y	H BLOCK AND N BLOCK	Y	Y	N
11/09/2024	LINX	HARVEST LEADER	081	DAY	107	N	GSHED EAVES, C BLOCK, O BLOCK AND ESHED	Y	Y	N
13/09/2024	QUBE	GLOVIS CROWN	004	EVENING	105	N	F BLOCK AND H BLOCK	Y	Y	N
13/09/2024	QUBE	TIANJIN HIGHWAY	165	EVENING	106	N	H BLOCK AND M BLOCK	Y	Y	N
13/09/2024	LINX	POSITIVE LEADER	124	EVENING	107	N	C BLOCK, O BLOCK AND Q BLOCK	Y	Y	N
15/09/2024	QUBE	GLOVIS COMPANION	005	DAY	107	Y	107CON, A BLOCK AND C BLOCK	Y	Y	N
16/09/2024	LINX	HOEGH TRANSPORTER	173	DAY	106	Y	D BLOCK, F BLOCK, H BLOCK, ESHED, K BLOCK, LBLOCK AND PSUED	Y	Y	N
18/09/2024	QUBE	AAL SHANGHAI	24008	DAY	106	N	RAILSIDING, L BLOCK AND P SHED	Y	Y	N
18/09/2024	QUBE	TRANSFUTURE 5	155	DAY	107	N	ESHED EAVES, C BLOCK, Q BLOCK AND ESHED	Y	Y	N
22/09/2024	LINX	HOEGH BRASILIA	120	DAY	105	N	F BLOCK, H BLOCK AND N BLOCK	Y	Y	N
22/09/2024	LINX	RHEA LEADER	126	DAY	107	N	C BLOCK, O BLOCK AND Q BLOCK	Y	Y	N
24/09/2024	QUBE	TOLEDO	EE415	NIGHT	105	Y	F BLOCK, H BLOCK, ESHED AND N BLOCK	Y	Y	N
24/09/2024	QUBE	PARSIFAL	EE416	NIGHT	107	N	ESHED EAVES, GSHED EAVES, I BLOCK, C BLOCK, O BLOCK AND ESHED	Y	Y	N
24/09/2024	QUBE	AFRICAN LORIKEET	24101	DAY	103	N	DIRECT TO TRUCK	Y	Y	N
24/09/2024	QUBE	FLORAGRACHT	2406	DAY	106	Y	L BLOCK AND PSUED	Y	Y	N
25/09/2024	QUBE	WALRUS ACE	048	DAY	107	Y	107CON, A BLOCK, C BLOCK, O BLOCK, Q BLOCK AND ESHED	Y	Y	N
25/09/2024	QUBE	KARIYUSHI LEADER	076	EVENING	105	N	F BLOCK, H BLOCK AND N BLOCK	Y	Y	N
26/09/2024	QUBE	GRAND CHAMPION	004	DAY	107	Y	107STR, ESHED EAVES, A BLOCK, C BLOCK, D BLOCK, O BLOCK AND ESHED	Y	Y	N
27/09/2024	QUBE	BROOKLANDS	024	DAY	105	N	D BLOCK, F BLOCK AND N BLOCK	Y	Y	N
29/09/2024	QUBE	SWAN ACE	134	NIGHT	106	N	H BLOCK, R BLOCK AND L BLOCK	Y	Y	N
29/09/2024	QUBE	TITANIA	EF413	NIGHT	107	N	ESHED EAVES, GSHED EAVES, 107CON, C BLOCK, O BLOCK, Q BLOCK AND GSHED	Y	Y	N
29/09/2024	QUBE	VIKING PASSAMA	V2409	DAY	105	N	B BLOCK, E SHED AND N BLOCK	Y	Y	N
30/09/2024	LINX	PLUTO LEADER	055	NIGHT	106	Y	ESHED EAVES, C BLOCK, Q BLOCK AND ESHED	Y	Y	N

Legend - Berth # and Laydown

	Primary
	Secondary
	Tertiary

TOTAL VESSELS FOR MONTH	24	8
GREEN BERTH	16	7
ORANGE BERTH	8	1
RED BERTH	0	0
GREEN LAYDOWN	20	8
ORANGE LAYDOWN	4	0
RED LAYDOWN	0	0

NUMBER OF BERTHING DELAYS	4	2
NUMBER OF MACHINERY ISSUES/REQUESTS NOT MET	0	0

NOTES
VESSEL BERTHED AT 105 DUE TO 106 AND 107 BEING OCCUPIED.
F BLOCK UTILISED AS NOT ENOUGH SPACE IN H BLOCK. VESSEL BERTHED AT 105 DUE TO 106 AND 107 BEING OCCUPIED.
VESSEL BERTHED AT 105 DUE TO 106 AND 107 BEING OCCUPIED.
VESSEL BERTHED AT 105 DUE TO 106 AND 107 BEING OCCUPIED.
VESSEL BERTHED AT 105 DUE TO 106 AND 107 BEING OCCUPIED.
VESSEL BERTHED AT 105 DUE TO 106 AND 107 BEING OCCUPIED.
VESSEL BERTHED AT 105 DUE TO 106 AND 107 BEING OCCUPIED. D BLOCK UTILISED AS NOT ENOUGH SPACE IN C BLOCK. H BLOCK NOT UTILISED AS NOT ENOUGH SPACE.VESSEL BERTHED AT 105 DUE TO 106 AND 107 BEING OCCUPIED.
H BLOCK NOT UTILISED AS NOT ENOUGH SPACE.VESSEL BERTHED AT 105 DUE TO 106 AND 107 BEING OCCUPIED.

SEE ATTACHED SHEETS SHOWING BERTH AND CONGESTION DELAYS

DATE	STEVE-DORE	VESSEL	VOYAGE	STARTING SHIFT	BERTH #	BERTH DELAY	LAYDOWN	MACHINERY REQUEST RECEIVED	MACHINERY REQUEST FILLED	MACHINERY ISSUES
1/10/2024	QUBE	ADRIA ACE	142	EVENING	105	N	D BLOCK, R BLOCK, M BLOCK AND N BLOCK	Y	Y	N
1/10/2024	QUBE	PLATINUM RAY	002	EVENING	106	N	D BLOCK, F BLOCK AND H BLOCK	Y	Y	N
2/10/2024	LINX	HOEGH ST. PETERSBURG	89	EVENING	107	N	ESHED EAVES, GSHED EAVES, C BLOCK, Q BLOCK AND ESHED	Y	Y	N
4/10/2024	QUBE	BERGAMOT ACE	140	NIGHT	105	N	D BLOCK, F BLOCK, H BLOCK AND N BLOCK	Y	Y	N
4/10/2024	QUBE	VIKING PAGLIA	V2468	NIGHT	106	N	D BLOCK, F BLOCK, H BLOCK, M BLOCK AND PSHEd	Y	Y	N
4/10/2024	LINX	TRANS FUTURE 7	155	NIGHT	107	N	107CON, A BLOCK, B BLOCK, C BLOCK, O BLOCK, Q BLOCK AND ESHED	Y	Y	N
5/10/2024	LINX	GREEN WAVE	004	DAY	107	N	ESHED EAVES, A BLOCK, C BLOCK, O BLOCK, Q BLOCK AND ESHED	Y	Y	N
5/10/2024	LINX	COURAGEOUS ACE	172	EVENING	105	N	B BLOCK, D BLOCK, H BLOCK, M BLOCK AND N BLOCK	Y	Y	N
6/10/2024	QUBE	MAASGRACHT	2407	NIGHT	105	Y	I BLOCK AND L BLOCK	Y	Y	N
6/10/2024	QUBE	MORNING CECILIE	EE417	EVENING	107	Y	ESHED EAVES, GSHED EAVES, A BLOCK, C BLOCK AND ESHED	Y	Y	N
8/10/2024	QUBE	GLOBAL MIRAI	1024	EVENING	105	Y	DIRECT TO TRUCK	Y	Y	N
8/10/2024	QUBE	VIKING CORAL	058	EVENING	106	Y	F BLOCK AND H BLOCK	Y	Y	N
9/10/2024	QUBE	BLUE OCEAN	2401	DAY	103	Y	DIRECT TO TRUCK	Y	Y	N
10/10/2024	QUBE	SALOME	EE418	DAY	107	N	107CON, ESHED EAVES, GSHED EAVES, I BLOCK, C BLOCK, Q BLOCK AND ESHED	Y	Y	N
10/10/2024	LINX	CSAV RIO NEVADO	24RN06	EVENING	106	N	H BLOCK	Y	Y	N
11/10/2024	LINX	GRAND QUEST	24G007	DAY	106	N	F BLOCK AND H BLOCK	Y	Y	N
12/10/2024	QUBE	IVORY ARROW	158	NIGHT	106	N	D BLOCK, F BLOCK, L BLOCK AND PSHEd	Y	Y	N
12/10/2024	LINX	HOEGH DETROIT	120	NIGHT	107	N	E SHED EAVES, G SHED EAVES, C BLOCK, Q BLOCK AND ESHED	Y	Y	N
12/10/2024	QUBE	ONYX ACE	106	DAY	106	Y	B BLOCK AND D BLOCK	Y	Y	N
13/10/2024	QUBE	DUGONG ACE	050	NIGHT	107	N	107CON, I BLOCK, B BLOCK, C BLOCK, O BLOCK AND ESHED	Y	Y	N
14/10/2024	QUBE	MANILA TRADER	OCT24	NIGHT	103	Y	DIRECT TO TRUCK	Y	Y	N
15/10/2024	QUBE	OLYMPIAN HIGHWAY	062	EVENING	107	N	E SHED EAVES, C BLOCK, Q BLOCK AND ESHED	Y	Y	N
16/10/2024	QUBE	OCEAN MAKMUR	061	DAY	103	Y	DIRECT TO TRUCK	Y	Y	N
17/10/2024	LINX	HOEGH TRACER	50	NIGHT	106	N	F BLOCK, H BLOCK, L BLOCK AND PSHEd	Y	Y	N
17/10/2024	QUBE	MORNING LILY	EF414	NIGHT	107	Y	E SHED EAVES, G SHED EAVES, 107CON, Q BLOCK AND ESHED	Y	Y	N
18/10/2024	LINX	APHRODITE LEADER	049	DAY	106	N	F BLOCK AND M BLOCK	Y	Y	N
19/10/2024	LINX	WISDOM ACE	089	NIGHT	107	N	107CON, C BLOCK AND ESHED	Y	Y	N
19/10/2024	LINX	ASIA SPIRIT	OCT24	EVENING	106	Y	LOAD ONLY	Y	Y	N
20/10/2024	LINX	JUPITER LEADER	066	DAY	107	N	GSHED EAVES, A BLOCK, B BLOCK, C BLOCK, O BLOCK AND Q BLOCK	Y	Y	N
22/10/2024	QUBE	LAKE GENEVA	024	NIGHT	107	Y	A BLOCK, C BLOCK, D BLOCK AND ESHED	Y	Y	N
22/10/2024	QUBE	RCC ASIA	019	EVENING	106	Y	F BLOCK, H BLOCK, L BLOCK AND PSHEd	Y	Y	N
24/10/2024	QUBE	IRIS K	001	NIGHT	103	N	DIRECT TO TRUCK	Y	Y	N
24/10/2024	QUBE	MORNING CRYSTAL	V2469	NIGHT	107	Y	ESHED EAVES, A BLOCK, C BLOCK AND ESHED	Y	Y	N
25/10/2024	LINX	POSITIVE LEADER	125	NIGHT	106	N	D BLOCK, F BLOCK AND H BLOCK	Y	Y	N
26/10/2024	LINX	HERMES LEADER	071	NIGHT	106	Y	D BLOCK, H BLOCK, M BLOCK AND PSHEd	Y	Y	N
26/10/2024	QUBE	UHL FABLE	2402	NIGHT	107	Y	AAT MOBILE CRANE - REMAINING AT AAT	Y	Y	N
26/10/2024	QUBE	DON JUAN	V2470	EVENING	105	Y	B BLOCK, D BLOCK, R BLOCK, K BLOCK, M BLOCK AND PSHEd	Y	Y	N
27/10/2024	QUBE	BLUE BALLSTIER	2401	EVENING	106	Y	GSHED, I BLOCK, L BLOCK AND PSHEd	Y	Y	N
28/10/2024	QUBE	AAL HONG KONG	24009	NIGHT	103	Y	DIRECT TO TRUCK	Y	Y	N
28/10/2024	LINX	TRANS FUTURE 6	154	NIGHT	107	Y	107CON, A BLOCK, B BLOCK, C BLOCK, O BLOCK AND ESHED	Y	Y	N
29/10/2024	LINX	KARIYUSHI LEADER	077	NIGHT	105	Y	B BLOCK, F BLOCK, H BLOCK AND N BLOCK	Y	Y	N
29/10/2024	LINX	HOEGH TRIGGER	52	EVENING	107	Y	ESHED EAVES, A BLOCK, C BLOCK, Q BLOCK AND ESHED	Y	Y	N
30/10/2024	QUBE	CATTELEYA ACE	097	EVENING	105	Y	D BLOCK, F BLOCK, H BLOCK AND N BLOCK	Y	Y	N
31/10/2024	QUBE	AMERICAN HIGHWAY	217	DAY	107	Y	ESHED EAVES, A BLOCK, C BLOCK, O BLOCK, Q BLOCK AND ESHED	Y	Y	N

Legend - Berth # and Laydown

	Primary
	Secondary
	Tertiary

TOTAL VESSELS FOR MONTH	27	17
GREEN BERTH	24	15
ORANGE BERTH	3	2
RED BERTH	0	0
GREEN LAYDOWN	23	14
ORANGE LAYDOWN	4	3
RED LAYDOWN	0	0

NUMBER OF BERTHING DELAYS	18	5
NUMBER OF MACHINERY ISSUES/REQUESTS NOT MET	0	0

NOTES
VESSEL BERTHED AT 105 DUE TO 106 AND 107 BEING OCCUPIED. H BLOCK NOT UTILISED AS FULL
VESSEL BERTHED AT 105 DUE TO 106 AND 107 BEING OCCUPIED.
VESSEL BERTHED AT 105 DUE TO 106 AND 107 BEING OCCUPIED.
N BLOCK AND M BLOCK UNAVAILABLE
B BLOCK UTILISED AS NOT ENOUGH SPACE IN C BLOCK
F BLOCK UTILISED AS NOT ENOUGH SPACE IN H BLOCK
B BLOCK UTILISED AS NOT ENOUGH SPACE IN C BLOCK
H BLOCK NOT UTILISED AS NOT ENOUGH SPACE
B BLOCK UTILISED AS NOT ENOUGH SPACE IN C BLOCK
VESSEL BERTHED AT 105 DUE TO 106 AND 107 BEING OCCUPIED.
VESSEL BERTHED AT 105 DUE TO 106 AND 107 BEING OCCUPIED.

SEE ATTACHED SHEETS SHOWING BERTH AND CONGESTION DELAYS

DATE	STEVE-DORE	VESSEL	VOYAGE	STARTING SHIFT	BERTH #	BERTH DELAY	LAYDOWN	MACHINERY REQUEST RECEIVED	MACHINERY REQUEST FILLED	MACHINERY ISSUES
1/11/2024	LINX	SUN UNITY	026	EVENING	103	N	103 STRINGER	Y	Y	N
2/11/2024	LINX	GLOVIS CRYSTAL	001	NIGHT	105	Y	F BLOCK, H BLOCK, R BLOCK, M BLOCK AND N BLOCK	Y	Y	N
2/11/2024	LINX	VOLANS LEADER	139	EVENING	107	Y	107CON, A BLOCK, B BLOCK, C BLOCK, O BLOCK, Q BLOCK AND ESHED	Y	Y	N
4/11/2024	QUBE	GRAND VENUS	026	NIGHT	105	Y	B BLOCK, K BLOCK, M BLOCK AND N BLOCK	Y	Y	N
4/11/2024	QUBE	TURANDOT	V2471	NIGHT	106	Y	F BLOCK AND H BLOCK	Y	Y	N
4/11/2024	LINX	TRANS FUTURE 5	156	NIGHT	107	Y	GSHED EAVES, 107CON, A BLOCK AND B BLOCK	Y	Y	N
5/11/2024	QUBE	VIKING PASSAMA	V2472	NIGHT	105	N	D BLOCK, F BLOCK, H BLOCK, PSHED AND N BLOCK	Y	Y	N
6/11/2024	QUBE	TONSBERG	N2404	NIGHT	107	Y	ESHED EAVES, 107CON, C BLOCK, Q BLOCK, ESHED AND GSHED	Y	Y	N
6/11/2024	QUBE	AAL BANGKOK	24010	EVENING	103	Y	103 STRINGER	Y	Y	N
10/11/2024	LINX	OCEANUS LEADER	086	DAY	106	N	D BLOCK, F BLOCK, H BLOCK, R BLOCK AND L BLOCK	Y	Y	N
10/11/2024	QUBE	VIKING OCEAN	016	EVENING	105	N	B BLOCK, D BLOCK, K BLOCK AND N BLOCK	Y	Y	N
11/11/2024	QUBE	PRIMROSE ACE	156	NIGHT	107	N	GSHED EAVES, C BLOCK, Q BLOCK AND ESHED	Y	Y	N
13/11/2024	LINX	MERCURY LEADER	064	DAY	106	N	D BLOCK, H BLOCK, L BLOCK, M BLOCK AND PSHED	Y	Y	N
13/11/2024	QUBE	PLEAIDES SPIRIT	097	DAY	105	N	B BLOCK, D BLOCK AND N BLOCK	Y	Y	N
13/11/2024	QUBE	ELEKTRA	EE420	EVENING	107	N	ESHED EAVES, GSHED EAVES, 107CON, C BLOCK, Q BLOCK Q BLOCK AND ESHED	Y	Y	N
14/11/2024	LINX	CSAV RIO NEVADO	24RN006	NIGHT	106	N	D BLOCK AND F BLOCK	Y	Y	N
15/11/2024	QUBE	MINERVAGRACHT	2407	NIGHT	103	N	103 STRINGER	Y	Y	N
15/11/2024	QUBE	EASTERN HIGHWAY	156	NIGHT	105	Y	D BLOCK, F BLOCK AND H BLOCK	Y	Y	N
15/11/2024	QUBE	AAL SHANGHAI	24010	NIGHT	106	N	RAILSIDING AND I BLOCK	Y	Y	N
15/11/2024	LINX	TRANS FUTURE 7	156	EVENING	107	Y	GSHED EAVES, A BLOCK, C BLOCK, O BLOCK AND ESHED	Y	Y	N
17/11/2024	QUBE	VIKING CORAL	059	DAY	105	N	H BLOCK AND N BLOCK	Y	Y	N
18/11/2024	QUBE	GLOVIS CHORUS	080	DAY	105	N	F BLOCK, H BLOCK AND R BLOCK	Y	Y	N
18/11/2024	QUBE	TORINO	NZ405	DAY	107	N	ESHED EAVES, 107CON, A BLOCK, C BLOCK, O BLOCK, Q BLOCK, ESHED AND GSHED	Y	Y	N
18/11/2024	LINX	POYANG	710	EVENING	106	Y	LOAD ONLY	Y	Y	N
20/11/2024	QUBE	TYSLA	EE419	NIGHT	107	N	GSHED EAVES, 107CON, C BLOCK, O BLOCK, Q BLOCK, ESHED AND LINKSPAN	Y	Y	N
22/11/2024	LINX	GENIUS HIGHWAY	075	DAY	107	N	C BLOCK, O BLOCK AND ESHED	Y	Y	N
23/11/2024	LINX	GRACIOUS ACE	102	NIGHT	105	N	H BLOCK	Y	Y	N
24/11/2024	QUBE	SWIFT ACE	134	NIGHT	105	N	D BLOCK, F BLOCK AND N BLOCK	Y	Y	N
24/11/2024	QUBE	PAN OPTIMUM	NOV24	EVENING	103	N	DIRECT TO TRUCK	Y	Y	N
24/11/2024	LINX	HOEGH TARGET	54	EVENING	106	N	F BLOCK, H BLOCK, ESHED, M BLOCK AND PSHED	Y	Y	N
25/11/2024	LINX	HOEGH BERLIN	128	DAY	107	N	ESHED EAVES, GSHED, A BLOCK, C BLOCK, O BLOCK AND Q BLOCK	Y	Y	N
26/11/2024	LINX	APHRODITE LEADER	050	NIGHT	106	N	D BLOCK, F BLOCK, K BLOCK AND L BLOCK	Y	Y	N
27/11/2024	LINX	POSITIVE LEADER	126	EVENING	107	N	C BLOCK	Y	Y	N
28/11/2024	QUBE	IVS MAGPIE	2401Z	EVENING	106	N	L BLOCK, K BLOCK AND PSHED	Y	Y	N
30/11/2024	QUBE	MORNING CHERRY	V2473	EVENING	107	N	GSHED EAVES, 107CON, ESHED, C BLOCK, O BLOCK AND Q BLOCK	Y	Y	N

Legend - Berth # and Laydown

	Primary
	Secondary
	Tertiary

	QUBE	LINX
<b>TOTAL VESSELS FOR MONTH</b>	20	15
GREEN BERTH	12	13
ORANGE BERTH	8	2
RED BERTH	0	0
<b>GREEN LAYDOWN</b>	15	12
ORANGE LAYDOWN	5	3
RED LAYDOWN	0	0
<b>NUMBER OF BERTHING DELAYS</b>	5	5
<b>NUMBER OF MACHINERY ISSUES/REQUESTS NOT MET</b>	0	0

NOTES
VESSEL BERTHED AT 105 DUE TO 106 AND 107 BEING OCCUPIED.
B BLOCK UTILISED AS NOT ENOUGH SPACE IN C BLOCK
VESSEL BERTHED AT 105 DUE TO 106 AND 107 BEING OCCUPIED. H BLOCK NOT UTILISED AS FULL
B BLOCK UTILISED AS NOT ENOUGH SPACE IN C BLOCK
VESSEL BERTHED AT 105 DUE TO 106 AND 107 BEING OCCUPIED.
VESSEL BERTHED AT 105 DUE TO 106 AND 107 BEING OCCUPIED. H BLOCK NOT UTILISED AS FULL
VESSEL BERTHED AT 105 DUE TO 106 AND 107 BEING OCCUPIED. H BLOCK NOT UTILISED AS FULL
H BLOCK NOT UTILISED AS FULL
VESSEL BERTHED AT 105 DUE TO 106 AND 107 BEING OCCUPIED.
VESSEL BERTHED AT 105 DUE TO 106 AND 107 BEING OCCUPIED.
VESSEL BERTHED AT 105 DUE TO 106 AND 107 BEING OCCUPIED.
VESSEL BERTHED AT 105 DUE TO 106 AND 107 BEING OCCUPIED.
H BLOCK NOT UTILISED AS GRACIOUS DISCHARGED THERE.
H BLOCK NOT UTILISED AS FULL

SEE ATTACHED SHEETS SHOWING BERTH AND CONGESTION DELAYS

DATE	STEVE-DORE	VESSEL	VOYAGE	STARTING SHIFT	BERTH #	BERTH DELAY	LAYDOWN	MACHINERY REQUEST RECEIVED	MACHINERY REQUEST FILLED	MACHINERY ISSUES	NOTES
3/12/2024	QUBE	SERENITY HIGHWAY	008	EVENING	105	N	F BLOCK, H BLOCK AND N BLOCK	Y	Y	N	VESSEL BERTHED AT 105 DUE TO 106 AND 107 BEING OCCUPIED.
3/12/2024	LINX	TRANS FUTURE 6	155	EVENING	107	N	ESHED EAVES, 107STRG, C BLOCK AND O BLOCK	Y	Y	N	
4/12/2024	QUBE	ALKIMOS HERACLES	1224	EVENING	103	N	DIRECT TO TRUCK	Y	Y	N	
5/12/2024	QUBE	OLYMPIAN HIGHWAY	063	DAY	107	Y	ESHED EAVES, ESHED, 107STRG, A BLOCK, C BLOCK, O BLOCK AND Q BLOCK	Y	Y	N	
6/12/2024	QUBE	DUGONG ACE	051	EVENING	106	Y	D BLOCK, H BLOCK, I BLOCK	Y	Y	N	
7/12/2024	LINX	EQUULEUS LEADER	050	DAY	105	N	D BLOCK, R BLOCK AND N BLOCK	Y	Y	N	VESSEL BERTHED AT 105 DUE TO 106 AND 107 BEING OCCUPIED.
8/12/2024	LINX	KARIYUSHI LEADER	078	EVENING	105	N	B BLOCK	Y	Y	N	VESSEL BERTHED AT 105 DUE TO 106 AND 107 BEING OCCUPIED. H BLOCK NOT UTILISED AS FULL
10/12/2024	QUBE	BBC MANILA	9016	NIGHT	105	Y	N BLOCK AND GEAR STORE	Y	Y	N	
10/12/2024	QUBE	AMERICAN HIGHWAY	218	EVENING	107	N	107CON AND C BLOCK	Y	Y	N	
11/12/2024	QUBE	EUPHONY ACE	153	NIGHT	106	Y	B BLOCK, D BLOCK, F BLOCK, H BLOCK, M BLOCK AND PSHEd	Y	Y	N	
11/12/2024	QUBE	MALTO ELAN	1224	DAY	103	Y	DIRECT TO TRUCK	Y	Y	N	
12/12/2024	QUBE	ARGUS RAY	001	NIGHT	107	Y	107CON, A BLOCK, B BLOCK, C BLOCK, O BLOCK AND Q BLOCK	Y	Y	N	B BLOCK UTILISED AS NOT ENOUGH SPACE IN C BLOCK
12/12/2024	QUBE	PAGANELLA	V2474	DAY	105	N	F BLOCK, H BLOCK AND N BLOCK	Y	Y	N	VESSEL BERTHED AT 105 DUE TO 106 AND 107 BEING OCCUPIED.
12/12/2024	LINX	MOUNT HOOD	009	EVENING	106	Y	LOAD ONLY	Y	Y	N	
14/12/2024	QUBE	WISDOM ACE	090	NIGHT	105	Y	D BLOCK, F BLOCK, H BLOCK, R BLOCK AND N BLOCK	Y	Y	N	VESSEL BERTHED AT 105 DUE TO 106 AND 107 BEING OCCUPIED.
15/12/2024	LINX	TRANS FUTURE 5	157	NIGHT	107	Y	GSHEd EAVES, A BLOCK, B BLOCK, C BLOCK, D BLOCK AND ESHED	Y	Y	N	B BLOCK AND D BLOCK UTILISED AS NOT ENOUGH SPACE IN C BLOCK
16/12/2024	LINX	GRAND QUEST	24G008	NIGHT	105	Y	D BLOCK AND K BLOCK	Y	Y	N	VESSEL BERTHED AT 105 DUE TO 106 AND 107 BEING OCCUPIED. H BLOCK NOT UTILISED AS FULL
16/12/2024	QUBE	ANIARA	EE421	EVENING	107	Y	107STRG, A BLOCK, B BLOCK, D BLOCK, ESHED AND I BLOCK	Y	Y	N	B BLOCK AND D BLOCK UTILISED AS NOT ENOUGH SPACE IN C BLOCK
17/12/2024	QUBE	GLOBAL HIGHWAY	068	NIGHT	105	Y	D BLOCK, F BLOCK, H BLOCK, R BLOCK AND N BLOCK	Y	Y	N	VESSEL BERTHED AT 105 DUE TO 106 AND 107 BEING OCCUPIED.
19/12/2024	LINX	RHEA LEADER	128	NIGHT	107	Y	A BLOCK, C BLOCK, O BLOCK AND D BLOCK	Y	Y	N	D BLOCK UTILISED AS NOT ENOUGH SPACE IN C BLOCK
20/12/2024	LINX	PAGNA	034	NIGHT	105	N	F BLOCK, H BLOCK AND N BLOCK	Y	Y	N	VESSEL BERTHED AT 105 DUE TO 106 AND 107 BEING OCCUPIED.
22/12/2024	QUBE	AAL KOBE	24004	NIGHT	106	Y	RAILSIDING AND I BLOCK	Y	Y	N	
23/12/2024	*LAY UP	GLOVIS CRYSTAL	002	DAY	105	N	LAY UP ONLY FOR DAFF INSPECTION	Y	Y	N	
23/12/2024	LINX	VICTORY RAY	004	DAY	107	N	D BLOCK, F BLOCK AND H BLOCK	Y	Y	N	
26/12/2024	LINX	HOEGH AURORA	2	DAY	107	N	GSHEd EAVES, C BLOCK, O BLOCK, ESHED AND I BLOCK	Y	Y	N	
27/12/2024	QUBE	ULTRA YORKSHIRE	1224	DAY	103	N	DIRECT TO TRUCK	Y	Y	N	
27/12/2024	LINX	GRAND DOLPHIN	023	DAY	106	N	F BLOCK AND H BLOCK	Y	Y	N	
27/12/2024	LINX	MORNING MARGARETA	021	DAY	107	N	A BLOCK, C BLOCK AND Q BLOCK	Y	Y	N	
29/12/2024	LINX	GREEN OCEAN	010	NIGHT	106	N	B BLOCK, D BLOCK, F BLOCK, H BLOCK, K BLOCK, M BLOCK AND PSHEd	Y	Y	N	

Legend - Berth # and Laydown  
 Primary  
 Secondary  
 Tertiary

TOTAL VESSELS FOR MONTH		QUBE	LINX
TOTAL VESSELS FOR MONTH		15	13
GREEN BERTH		11	9
ORANGE BERTH		4	4
RED BERTH		0	0
GREEN LAYDOWN		13	9
ORANGE LAYDOWN		2	4
RED LAYDOWN		0	0
NUMBER OF BERTHING DELAYS		10	4
NUMBER OF MACHINERY ISSUES/REQUESTS NOT MET		0	0

SEE ATTACHED SHEETS SHOWING BERTH AND CONGESTION DELAYS



Attachment A

## **KPI 6**

Allocation of first point of rest

Fisherman Islands

Jul 1 – Dec 31, 2024

**JULY**

NUMBER	DATE	STEVE-DORE	VESSEL	VOYAGE	STARTING SHIFT	BERTH #	BERTH DELAY	LAYDOWN	MACHINERY REQUEST RECEIVED	MACHINERY REQUEST FILLED	MACHINERY ISSUES	NOTES
1	27/1800	LINX	BBC MARMARA	23	MIDN	2	72HRS	B	YES	YES	NIL	Awaiting departure of BBC Marmara
2	29/1200	QP	VIKING PAGLIA	2462	EVE	3	48HRS	NS, F2 & L	YES	YES	NIL	Awaiting departure of NPD L Tahiti
3	29/2300	LINX	APHRODITE LEADER	46	EVE	1	32HRS	A, C & D	YES	YES	NIL	Awaiting departure of Walrus Ace
4	30/0400	QP	BBC HONG KONG	1325011	DAY	3	48HRS	J & WF3	YES	YES	NIL	Awaiting departure of Viking Paglia
5	30/2200	QP	ADRIA ACE	140	DAY	1	48HRS	A, C & M	YES	YES	NIL	Awaiting departure of Aphrodite Leader
6	01/1730	LINX	TRANS FUTURE 6		MIDN	1	48HRS	A, C, D & M	YES	YES	NIL	Awaiting departure of Adria Ace
7	02/1400	QP	MORNING LUCY	EF407	MIDN	1	64HRS	A, M, B, WF1, OLD D	YES	YES	NIL	Awaiting departure of Trans Futrure 6
8	04/0230	LINX	CSAV RIO NEVADO	24RN04	DAY	1	48HRS	C	YES	YES	NIL	Awaiting departure of Morning Lucy
9	04/0600	QP	AAL BANGKOK	24006	DAY	3	16HRS	OS, NS, J	YES	YES	NIL	Awaiting departure of
10	04/1130	TML	CORAL CHIEF	2415N	EVE	2	NIL	B	YES	YES	NIL	
11	04/1600	QP	BBC DESTINY	7038	EVE	2	32HRS	LOAD ONLY	YES	YES	NIL	Awaiting departure of Coral Chief
12	09/0100	QP	GENIUS HIGHWAY	73	DAY	3	NIL	E, F, NS, WF3	YES	YES	NIL	
13	09/0600	LINX	OT IDEAL	44	EVE	2	NIL	B	YES	YES	NIL	
14	09/0700	QP	TORINO	EF408	EVE	3	24HRS	E, H & G	YES	YES	NIL	Awaiting departure of Genius Highway
15	09/2200	QP	RCC ASIA	17	DAY	2	24HRS	M & D	YES	YES	NIL	Awaiting departure of O.T. Ideaal
16	10/2130	QP	HORIZON HIGHWAY	80	DAY	GB	NIL	A, C & D	YES	YES	NIL	
17	10/2300	LINX	KARIYUSHI LEADER	74	EVE	GB	32HRS	A & C	YES	YES	NIL	Awaiting departure of Horizon Highway
18	11/1700	QP	NABUCCO	EE411	DAY	3	24HRS	E, OLD D, L & M	YES	YES	NIL	Awaiting departure of Torino
19	12/1000	QP	MORNING CRYSTAL	2463	DAY	GB	40HRS	A, D, C, GB, FLYOVER	YES	YES	NIL	Awaiting departure of Kariyushi Leader
20	12/1600	TML	ARKADIA	2416N	MIDN	2	NIL	B	YES	YES	NIL	
21	12/1900	TML	AUDREY SW	2401	MIDN	3	32HRS	OS, NS, J	YES	YES	NIL	Awaiting departure of Nacucco
22	13/1100	LINX	ANNAMARIA	004B	EVE	2	24HRS	B	YES	YES	NIL	Awaiting departure of Arkadia
23	14/1900	QP	AAL SHANGHAI	24006	EVE	3	8HRS	UH, B, NS, AWNING & OUTSIDE OS	YES	YES	NIL	Awaiting departure of Audrey
24	14/2100	QP	WEAVER ARROW	2403	EVE	2	104HRS	OS, NS & F1	YES	YES	NIL	Awaiting departure of Highland Chief
25	15/0600	LINX	TRANS FUTURE 5		EVE	GB	8HRS	A, C & WF1	YES	YES	NIL	Awaiting departure of Morning Crystal
26	15/1300	LINX	HOEGH BERLIN	126	EVE	2	16HRS	M	YES	YES	NIL	Awaiting departure of Annamaria
27	17/2000	TML	HIGHLAND CHIEF	2416N	MIDN	2	NIL	B	YES	YES	NIL	
28	18/2230	QP	BBC RAISE		EVE	2	128HRS	B	YES	YES	NIL	Awaiting departure of Weaver Arrow
29	19/0900	LINX	HARVEST LEADER	80	MIDN	1	8HRS	A, C & M	YES	YES	NIL	Awaiting crane demolition works at Berth 1 to complete
30	20/1330	QP	GRACIOUS ACE	98	DAY	1	8HRS	D	YES	YES	NIL	Awaiting departure ofHarvest Leader
31	20/1500	QP	ANIARA	EF409	EVE	3	88HRS	E	YES	YES	NIL	Awaiting departure of AAL Shangai
32	20/1500	QP	BBC EVEREST	1046089	EVE	3	112HRS	UHOOK	YES	YES	NIL	Awaiting departure of Aniara
33	21/0700	LINX	BBC MARMARA	24	MIDN	2	104HRS	B	YES	YES	NIL	Awaiting departure of BBC Raise
34	21/1200	TML	ATLAS WIND	015E	DAY	3	112HRS	B	YES	YES	NIL	Awaiting departure of BBC Everest
35	21/1700	QP	MERCURY ACE	103	DAY	1	16HRS	A & C	YES	YES	NIL	Awaiting departure of Gracious Ace
36	23/0200	LINX	ASAHI BULKER	202406	MIDN	3	88HRS	H, W, G & NS	YES	YES	NIL	Awaiting departure of Atlas Wind
37	23/2100	LINX	OT IDEAL	45	DAY	2	80HRS	B	YES	YES	NIL	Awaiting departure of BBC Mamara
39	24/1100	TML	BBC OCEAN	226	MIDN	2	104HRS	B	YES	YES	NIL	Awaiting departure of O.T. Ideaal
40	25/0900	LINX	HOEGH TROTTER	42	MIDN	1	16HRS	C, D & M	YES	YES	NIL	Awaiting crane demolition works at Berth 1 to complete
41	26/0500	LINX	POSITIVE LEADER	123	DAY	1	48HRS	A & C	YES	YES	NIL	Awaiting crane demolition works at Berth 1 to complete
42	26/1600	QP	JASPER ARROW	133	DAY	GB	72HRS	A & D	YES	YES	NIL	Awaiting availability of Grain Berth
43	27/2100	TML	NPD L TAHITI	2415S/2417N	DAY	2	48HRS	B	YES	YES	NIL	Awaiting departure of BBC Ocean
44	28/0005	QP	AZUL ACE	25	DAY	GB	72HRS	A, C & D	YES	YES	NIL	Awaiting departure of Jasper Arrow

**Legend - Berth # and Laydown**

<span style="background-color: #90EE90; border: 1px solid black; display: inline-block; width: 15px; height: 10px;"></span> Primary
<span style="background-color: #FFD700; border: 1px solid black; display: inline-block; width: 15px; height: 10px;"></span> Secondary
<span style="background-color: #FF0000; border: 1px solid black; display: inline-block; width: 15px; height: 10px;"></span> Tertiary

<b>SUMMARY</b>	<b>LINX</b>	<b>QUBE</b>	<b>TML</b>	<b>COMMENT</b>
<b>TOTAL VESSELS FOR MONTH</b>				
<b>GREEN BERTH (Primary)</b>	<b>13</b>	<b>17</b>	<b>7</b>	
<b>ORANGE BERTH (Secondary)</b>	<b>2</b>	<b>4</b>	<b>0</b>	
<b>RED BERTH (Tertiary)</b>	<b>0</b>	<b>0</b>	<b>0</b>	
<b>GREEN LAYDOWN (Primary)</b>	<b>8</b>	<b>6</b>	<b>6</b>	
<b>ORANGE LAYDOWN (Secondary)</b>	<b>7</b>	<b>15</b>	<b>1</b>	
<b>RED LAYDOWN (Tertiary)</b>	<b>0</b>	<b>0</b>	<b>0</b>	
<b>NUMBER OF BERTHING DELAYS</b>	<b>14</b>	<b>19</b>	<b>4</b>	
<b>NUMBER OF MACHINERY ISSUES/REQUESTS NOT MET</b>	<b>0</b>	<b>0</b>	<b>0</b>	

**AUGUST**

NUMBER	DATE	STEVE-DORE	VESSEL	VOYAGE	STARTING SHIFT	BERTH #	BERTH DELAY	LAYDOWN	MACHINERY REQUEST RECEIVED	MACHINERY REQUEST FILLED	MACHINERY ISSUES	NOTES
1	24/2100	LINX	HERCULES LEADER	102	MID	3	160HRS	E, M & L	YES	YES	NIL	Awaiting departure of Asahi Bulker
2	28/1500	QP	GLOVIS CROWN	3	EVE	GB	96HRS	A, C & D	YES	YES	NIL	Awaiting departure of Azul Ace
3	29/2230	QP	VIKING DIAMOND	61	DAY	2	72HRS	M	YES	YES	NIL	Awaiting departure of NPD L Tahiti
4	30/0800	QP	VIKING PASSAMA	2464	EVE	3	80HRS	E	YES	YES	NIL	Awaiting departure of Hercules Leader
5	01/1800	LINX	ANNAMARIA	005B	EVE	2	32HRS	B	YES	YES	NIL	Awaiting departure of Viking Diamond
6	30/2200	QP	AAL HONG KONG	25007	EVE	3	80HRS	B, NS, J & WF3	YES	YES	NIL	Awaiting departure of Viking Passama
7	30/1245	LINX	TRANS FUTURE 7	153	DAY	GB	112HRS	A & C	YES	YES	NIL	Awaiting departure of Glovis Crown
8	24/0730	QP	SKYLINE	111S	DAY	2	280HRS	B	YES	YES	NIL	Awaiting departure of Annamaria
9	04/1030	QP	RCC TIANJIN	13	EVE	GB	24HRS	A & C	YES	YES	NIL	Awaiting departure of Trans Future 7
10	05/1400	LINX	GREAT AGILITY	2404	DAY	2	8HRS	1, OS, B, WF2 & M	YES	YES	NIL	Awaiting departure of Skyline
11	06/1700	QP	GLOVIS SILVER	1	MID	GB	NIL	A & C	YES	YES	NIL	
12	06/1700	LINX	HOEGH LONDON	110	EVE	3	16HRS	E, W & M	YES	YES	NIL	Awaiting departure of AAL Hong Kong
13	06/1900	LINX	GRAND QUEST	24GQ05	MID	GB	16HRS	A & C	YES	YES	NIL	Awaiting departure of Glovis Silver
14	08/1000	TML	NEW GUINEA CHIEF	2417N	EVE	2	NIL	B	YES	YES	NIL	
15	08/0130	LINX	CANOPUS LEADER	125	DAY	GB	24HRS	A & C	YES	YES	NIL	Awaiting departure of Grand Quest
16	08/2130	QP	MORNING CHERRY	2465	DAY	1	24HRS	C & D	YES	YES	NIL	Awaiting crane demolition works at Berth 1 to complete
17	09/1400	QP	TIANJIN HIGHWAY	164	DAY	3	8HRS	W, H & WF3	YES	YES	NIL	Awaiting departure of Hoegh London
18	10/1330	TML	ARKADIA	2418N	EVE	2	NIL	B	YES	YES	NIL	
19	09/0100	LINX	IRIS LEADER	66	DAY	1	48HRS	A, D & M	YES	YES	NIL	Awaiting departure of Morning Cherry
20	12/0500	LINX	OT IDEAAL	46	DAY	2	24HRS	B	YES	YES	NIL	Awaiting departure of Arkadia
21	09/2300	QP	MORNING LISA	EF410	DAY	3	48HRS	NS & E	YES	YES	NIL	Awaiting departure of Tianjin Highway
22	09/0700	QP	SALVIA ACE	158	EVE	1	72HRS	C, D & M	YES	YES	NIL	Awaiting departure of Iris Leader
23	10/1500	QP	THEBEN	EE413	DAY	3	32HRS	E	YES	YES	NIL	Awaiting departure of Morning Lisa
24	13/0900	QP	IVORY ARROW	157	EVE	1	NIL	A & M	YES	YES	NIL	
25	10/1600	TML	BUNUN LEADER	2401S	EVE	2	88HRS	OS, F AND OTP	YES	YES	NIL	Awaiting departure of OT Ideaal
26	13/1900	LINX	NEW CENTURY 2	189	DAY	1	24HRS	A, C & D	YES	YES	NIL	Awaiting departure of Ivory Arrow
27	15/1515	QP	SEAPEARL	2401	MID	3	NIL	NS	YES	YES	NIL	
28	14/1300	QP	GRAND LEGACY	6	DAY	1	32HRS	C & D	YES	YES	NIL	Awaiting departure of New Century 2
29	16/1400	TML	HIGHLAND CHIEF	2418N	MID	2	NIL	B	YES	YES	NIL	
30	15/1800	QP	K.ASIAN BEAUTY	1	DAY	1	48HRS	A & D	YES	YES	NIL	Awaiting departure of Grand Legacy
31	16/1000	LINX	SUN UNITY	24	MID	3	56HRS	J & NS	YES	YES	NIL	Awaiting departure of Sea Pearl
32	19/0700	QP	ORCHID ACE	141	DAY	1	NIL	M	YES	YES	NIL	
33	18/1630	TML	BBC OCEAN	227	DAY	2	NIL	B	YES	YES	NIL	
34	20/0700	QP	BERGAMOT ACE	139	EVE	1	NIL	C	YES	YES	NIL	
35	19/1400	TML	NORFOLK	009W/010E	EVE	3	16HRS	B	YES	YES	NIL	Awaiting departure of BBC Ocean
36	20/1530	LINX	ANNAMARIA	006B	DAY	2	24HRS	B	YES	YES	NIL	Awaiting departure of Norfolk
37	21/0800	LINX	KARIYUSHI LEADER	75	EVE	1	NIL	A, C & D	YES	YES	NIL	
38	17/1530	LINX	MERWEDEGRACHT	2407	EVE	3	88HRS	J & REEFER	YES	YES	NIL	Awaiting departure of Sun Unity
39	22/0800	LINX	NEPTUNE LEADER	133	EVE	1	NIL	A & C	YES	YES	NIL	
40	23/0001	QP	PAGANELLA	2466	DAY	1	NIL	A & D	YES	YES	NIL	
41	21/0212	QP	GREBE ARROW	2404	DAY	3	48HRS	NS, F1, F2, J & H	YES	YES	NIL	Awaiting departure of Merwedegracht
42	23/1630	QP	RCC ASIA	18	MID	1	8HRS	A & C	YES	YES	NIL	Awaiting departure of Paganella
43	24/0500	LINX	HOEGH TOKYO	113	MID	1	16HRS	A, C & D	YES	YES	NIL	Awaiting departure of RCC Asia
44	21/0515	QP	AAL BANGKOK	24008	MID	3	112HRS	OS, F1, F2, J & H	YES	YES	NIL	Awaiting departure of Grebe Arrow
45	24/1630	QP	DUGONG ACE	48	DAY	1	40HRS	C & M	YES	YES	NIL	Awaiting departure of Hoegh Tokyo
46	25/0100	QP	TARIFA	EF411	DAY	2	48HRS	A	YES	YES	NIL	Awaiting departure of Dugong Ace (unable to fit due to LOA)
47	28/0500	QP	CATTLEYA ACE	96	EVE	1	NIL	A	YES	YES	NIL	
48	28/1000	TML	NPD L TAHITI	2419	EVE	2	NIL	B	YES	YES	NIL	
49	28/1830	LINX	OT IDEAAL	47	EVE	2	16HRS	B	YES	YES	NIL	Awaiting departure of NPD L Tahiti
50	29/1800	QP	AAL FREMANTLE	24008	DAY	3	NIL	H, J & ONS	YES	YES	NIL	
51	29/2200	QP	NIAGARA HIGHWAY	42	DAY	1	NIL	A & C	YES	YES	NIL	

**Legend - Berth # and Laydown**

- Primary
- Secondary
- Tertiary

SUMMARY	LINX	QUBE	TML	COMMENT
<b>TOTAL VESSELS FOR MONTH</b>				
<b>GREEN BERTH (Primary)</b>	<b>3</b>	<b>24</b>	<b>7</b>	
<b>ORANGE BERTH (Secondary)</b>	<b>14</b>	<b>3</b>	<b>0</b>	
<b>RED BERTH (Tertiary)</b>	<b>0</b>	<b>0</b>	<b>0</b>	
<b>GREEN LAYDOWN (Primary)</b>	<b>11</b>	<b>14</b>	<b>7</b>	
<b>ORANGE LAYDOWN (Secondary)</b>	<b>6</b>	<b>13</b>	<b>0</b>	
<b>RED LAYDOWN (Tertiary)</b>	<b>0</b>	<b>0</b>	<b>0</b>	
<b>NUMBER OF BERTHING DELAYS</b>	<b>15</b>	<b>18</b>	<b>2</b>	
<b>NUMBER OF MACHINERY ISSUES/REQUESTS NOT MET</b>	<b>0</b>	<b>0</b>	<b>0</b>	

**SEPTEMBER**

NUMBER	DATE	STEVE-DORE	VESSEL	VOYAGE	STARTING SHIFT	BERTH #	BERTH DELAY	LAYDOWN	MACHINERY REQUEST RECEIVED	MACHINERY REQUEST FILLED	MACHINERY ISSUES	NOTES
1	30/1600	LINX	HOEGH SHANGHAI	113	MID	1	NIL	A & C	YES	YES	NIL	
2	31/2300	TML	PACIFIC INNOVATION	25	DAY	2	NIL	B	YES	YES	NIL	
3	01/0100	LINX	APHRODITE LEADER	48	DAY	1	NIL	A, C & D	YES	YES	NIL	
4	01/1930	QP	GLOVIS COMET	86	MID	1	NIL	D & M	YES	YES	NIL	
5	02/0930	TML	NEW GUINEA CHIEF	2419N	EVE	2	NIL	B	YES	YES	NIL	
6	02/1700	LINX	TRANS FUTURE 6	153	DAY	1	8HRS	A, C & M	YES	YES	NIL	Awaiting departure of Glovis Comet
7	03/1100	TML	IZANAGI HARMONY	2402S	EVE	3	NIL	NS, H, J & F1	YES	YES	NIL	
8	07/0800	QP	TURANDOT	2467	EVE	1	NIL	A	YES	YES	NIL	
9	07/2000	LINX	ANNAMARIA	007B	DAY	2	NIL	B	YES	YES	NIL	
10	08/1100	LINX	HARVEST LEADER	81	EVE	1	NIL	C & M	YES	YES	NIL	
11	08/1230	TML	ARKADIA	2420N	EVE	3	NIL	H, F1 & REEFER	YES	YES	NIL	
12	09/1200	LINX	BBC MARMARA	26	MID	2	NIL	B	YES	YES	NIL	
13	10/0600	LINX	POSITIVE LEADER	124	EVE	1	NIL	A, C & D	YES	YES	NIL	
14	10/2100	QP	TIANJIN HIGHWAY	165	DAY	GB	NIL	A & D	YES	YES	NIL	
15	11/0600	TML	HIGHLAND CHIEF	2420N	EVE	2	NIL	B	YES	YES	NIL	
16	11/0700	LINX	GRAND QUEST	24GQ06	EVE	1	NIL	A, C & D	YES	YES	NIL	
17	11/1000	TML	BBC OCEAN	228	EVE	2	24HRS	B	YES	YES	NIL	Awaiting departure of Highland Chief
18	11/1115	QP	PROMINENT ACE	169	DAY	1	16HRS	D & M	YES	YES	NIL	Awaiting departure of Grand Quest
19	11/1700	QP	GLOVIS COMPANION	5	DAY	3	8HRS	E & W	YES	YES	NIL	Awaiting departure of BBC Mamara
20	13/1445	QP	FLORAGRACHT	2406	MID	3	NIL	J	YES	YES	NIL	
21	13/2300	LINX	OT IDEEAL	48	EVE	2	32HRS	B	YES	YES	NIL	Awaiting departure of BBC Ocean
22	14/2300	LINX	MARSGRACHT	2408	DAY	2	24HRS	F2	YES	YES	NIL	Awaiting departure of OT Ideeal
23	14/2359	QP	PLOVER ARROW	2405	MID	3	32HRS	NS, AWNING	YES	YES	NIL	Awaiting departure of Floragracht
24	16/0800	LINX	TRANS FUTURE 5	155	EVE	1	NIL	A & C	YES	YES	NIL	
25	17/0730	LINX	YANGTZE DIGNITY	2407	EVE	2	32HRS	OS, F1	YES	YES	NIL	Awaiting departure of Marsgracht
26	17/1230	QP	GLOVIS CROWN	4	MID	1	NIL	A & C	YES	YES	NIL	
27	18/1600	LINX	HOEGH TRANSPORTER	173	MID	1	32HRS	C, OLD D, M & W	YES	YES	NIL	Awaiting departure of Glovis Crown
28	18/1730	LINX	ONYX ARROW	116	DAY	1	64 HRS	D, OLD D, GB, W	YES	YES	NIL	Awaiting departure of Hoegh Transporter
29	19/1800	LINX	KARIYUSHI LEADER	76	DAY	1	88 HRS	A, C, D	YES	YES	NIL	Awaiting departure of Onyx Arrow
30	21/0500	QP	BROOKLANDS	4	EVE	1	48HRS	C, OLD D, GB, W	YES	YES	NIL	Awaiting departure of Kariyushi Leader
31	21/1200	QP	TITANIA	EF413	EVE	1	108HRS	A, C, B, NS, TP	YES	YES	NIL	Awaiting departure of Brooklands
32	22/1100	TML	BRIO FAITH	201W	DAY	1	4 HRS	B, E	YES	YES	NIL	Awaiting departure of Yangtze Dignity
33	24/0600	TML	NPD L TAHITI	2421N	MID	2	32HRS	B	YES	YES	NIL	Awaiting departure of Brio Faith
34	24/0600	LINX	ANNAMARIA	008B	EVE	2	64HRS	B	YES	YES	NIL	Awaiting departure of NPD L Tahiti
35	24/1800	LINX	PLUTO LEADER	55	DAY	3	40HRS	E, F1, WF3	YES	YES	NIL	Awaiting departure of Plover Arrow
36	25/1100	LINX	HOEGH BRASILIA	120	MID	1	48HRS	C	YES	YES	NIL	Awaiting departure of Titania
37	26/2100	QP	TOLEDO	EE415	MID	1	40HRS	A & C	YES	YES	NIL	Awaiting departure of Hoegh Braslia
38	26/2359	LINX	PLATINUM RAY	2	MID	GB	40HRS	A & C	YES	YES	NIL	Awaiting yard space
39	27/0630	TML	NEW GUINEA CHIEF	2421N	MID	2	48HRS	B	YES	YES	NIL	Awaiting departure of Annamaria
40	27/1000	LINX	HUMBERGRACHT		MID	3	NIL	B	YES	YES	NIL	Awaiting departure of Pluto Leader

**Legend - Berth # and Laydown**

	Primary
	Secondary
	Tertiary

**SUMMARY**

	LINX	QUBE	TML	COMMENT
<b>TOTAL VESSELS FOR MONTH</b>				
<b>GREEN BERTH (Primary)</b>	19	1	9	
<b>ORANGE BERTH (Secondary)</b>	1	10	0	
<b>RED BERTH (Tertiary)</b>	0	0	0	
<b>GREEN LAYDOWN (Primary)</b>	11	6	9	
<b>ORANGE LAYDOWN (Secondary)</b>	9	5	0	
<b>RED LAYDOWN (Tertiary)</b>	0	0	0	
<b>NUMBER OF BERTHING DELAYS</b>	11	6	4	
<b>NUMBER OF MACHINERY ISSUES/REQUESTS NOT MET</b>	0	0	0	

**OCTOBER**

NUMBER	DATE	STEVE-DORE	VESSEL	VOYAGE	STARTING SHIFT	BERTH #	BERTH DELAY	LAYDOWN	MACHINERY REQUEST RECEIVED	MACHINERY REQUEST FILLED	MACHINERY ISSUES	NOTES
1	26/2230	QP	VIKING PAGLIA	2468	DAY	3	72HRS	E	YES	YES	NIL	Awaiting departure of Humbergracht
2	27/2000	QP	WALRUS ACE	48	MID	1	64HRS	A	YES	YES	NIL	Awaiting departure of Toledo
3	28/1000	LINX	OT IDEEAL	49	EVE	2	48HRS	B	YES	YES	NIL	Awaiting departure of New Guinea Chief
4	30/0800	LINX	TRANS FUTURE 7	154	EVE	GB	16HRS	C & D	YES	YES	NIL	Awaiting departure of Patinum Ray
5	29/0130	LINX	GREEN WAVE	4	MID	3	64HRS	W	YES	YES	NIL	Awaiting departure of Viking Paglia
6	01/1500	QP	SWAN ACE	134	MID	1	24HRS	A & C	YES	YES	NIL	Awaiting departure of Walrus Ace
7	05/0200	LINX	HOEGH ST PETERSBURG	89	DAY	1	NIL	A & C	YES	YES	NIL	
8	05/1300	LINX	BBC MARMARA	27	EVE	2	NIL	B	YES	YES	NIL	
9	05/1200	LINX	ADRIA ACE	142	DAY	1	8HRS	A & D	YES	YES	NIL	Awaiting departure of Hoegh St Petersburg
10	06/0445	TML	ARKADIA	2422N	DAY	2	NIL	B	YES	YES	NIL	
11	06/1500	LINX	CSAV RIO NEVADO	24RN06	MID	3	24HRS	E	YES	YES	NIL	Awaiting departure of Arkadia
12	27/1000	QP	IVORY ARROW	158	MID	3	NIL	E	YES	YES	NIL	
13	07/0230	QP	COURAGEOUS ACE	172	EVE	1	56HRS	A & C	YES	YES	NIL	Awaiting departure of Morning Lily
14	09/1900	TML	HIGHLAND CHIEF	2422N	MID	2	NIL	B	YES	YES	NIL	
15	06/1700	LINX	BERGAMOT ACE	140	EVE	3	88HRS	E	YES	YES	NIL	Awaiting departure of Ivory Arrow
16	10/0700	QP	MORNING CECILIE	EE417	DAY	3	16HRS	E	YES	YES	NIL	Awaiting departure of Bergamot Ace
17	11/2000	LINX	ANNAMARIA	009B	DAY	2	24HRS	B	YES	YES	NIL	Awaiting departure of Highland Chief
18	10/1300	LINX	OLYMPIAN HIGHWAY	62	MID	1	56HRS	C & D	YES	YES	NIL	Awaiting departure of RCC Asia
19	04/2000	QP	MORNING LILY	EF414	MID	3	NIL	E	YES	YES	NIL	
20	14/1100	TML	BBC DIRECTION	230N	DAY	2	NIL	B	YES	YES	NIL	
21	12/0330	LINX	APHRODITE LEADER	49	EVE	1	56HRS	A & D	YES	YES	NIL	Awaiting departure of Olympian Ace
22	12/0600	TML	YANGTZE KEEPER	2404	EVE	3	48HRS	OS, H & AWNING	YES	YES	NIL	Awaiting departure of Morning Lily
23	08/0900	QP	RCC ASIA	19	MID	1	NIL	C	YES	YES	NIL	
24	14/1000	LINX	OT IDEEAL	50	DAY	2	64HRS	B	YES	YES	NIL	Awaiting departure of BBC Direction
25	16/0600	LINX	UHL FABLE	2402	DAY	3	24HRS	WF3	YES	YES	NIL	Awaiting departure of Yangtze Keeper
26	12/2018	LINX	JUPITER LEADER	66	DAY	1	144HRS	A & C	YES	YES	NIL	Awaiting departure of RCC Asia
27	15/2100	TML	BBC OCEAN	231	EVE	2	48HRS	B	YES	YES	NIL	Awaiting departure of OT Ideeal
28	12/2230	QP	SALOME	EE418	MID	1	136HRS	A & C	YES	YES	NIL	Awaiting departure of Jupiter Leader
29	12/0730	QP	MORNING CRYSTAL	2469	MID	1	NIL	A & C	YES	YES	NIL	
30	15/1700	TML	BLUE BALESTIER	2401	MID	2	96HRS	OS & F2	YES	YES	NIL	Awaiting departure of BBC Ocean
31	13/2100	QP	DON JUAN	2470	DAY	1	168HRS	A & C	YES	YES	NIL	Awaiting departure of Morning Crystal
32	14/1300	LINX	POSITIVE LEADER	125	DAY	GB	176HRS	C & D	YES	YES	NIL	Awaiting Grain Berth
33	14/0030	LINX	HOEGH DETROIT	120	EVE	1	200HRS	C & D	YES	YES	NIL	Awaiting departure of Don Juan
34	22/1630	TML	NPDL TAHITI	2423N	EVE	2	NIL	B	YES	YES	NIL	
35	17/1700	LINX	HERMES LEADER	71	DAY	1	128HRS	A	YES	YES	NIL	Awaiting departure of Hoegh Detroit
36	14/1700	LINX	TRANS FUTURE 6	154	DAY	GB	200HRS	A & C	YES	YES	NIL	Awaiting departure of Positive Leader
37	23/1000	TML	NEW GUINEA CHIEF	2423N	EVE	2	NIL	B	YES	YES	NIL	
38	19/0300	QP	AAL GENOA	24005	MID	3	112HRS	ONS & F1	YES	YES	NIL	Awaiting departure of UHL Fable
39	17/1030	QP	AMERICAN HIGHWAY	217	DAY	1	168HRS	A & OLD D	YES	YES	NIL	Awaiting departure of Hermes Leader
40	18/2200	LINX	ONYX ACE	106	EVE	GB	128HRS	A & C	YES	YES	NIL	Awaiting departure of Trans Future 6
41	19/1900	LINX	GRAND QUEST	24GQ07	EVE	1	136HRS	D	YES	YES	NIL	Awaiting departure of American Highway
42	22-Oct	TML	NORFOLK	11E	EVE	2	72HRS	B	YES	YES	NIL	Awaiting departure of New Guinea Chief
43	21/0700	QP	WISDOM ACE	89	DAY	1	112HRS	A & M	YES	YES	NIL	Awaiting departure of Grand Quest
44	25/1030	LINX	LAKE GENEVA	24	EVE	GB	24HRS	A & C	YES	YES	NIL	Awaiting departure of Onyx Ace
45	24/1530	LINX	BBC MARMARA	28	EVE	2	40HRS	B	YES	YES	NIL	Awaiting departure of Norfolk
46	23/1800	LINX	SUN UNITY		DAY	2	104HRS	OS & F2	YES	YES	NIL	Awaiting departure of BBCMamara
47	25/1300	LINX	VOLANS LEADER	139	DAY	GB	56HRS	A, C & D	YES	YES	NIL	Awaiting departure of Lake Geneva
48	21/0930	QP	TURANDOT	2471	MID	1	176HRS	A & C	YES	YES	NIL	Awaiting departure of Wisdom Ace
49	28/0600	LINX	TRANS FUTURE 5	156	EVE	GB	32HRS	A & C	YES	YES	NIL	Awaiting departure of Volans Leader

**Legend - Berth # and Laydown**

- Primary
- Secondary
- Tertiary

SUMMARY	LINX	QUBE	TML	COMMENT
<b>TOTAL VESSELS FOR MONTH</b>				QUBE PIA ISSUES
<b>GREEN BERTH (Primary)</b>	18	15	9	
<b>ORANGE BERTH (Secondary)</b>	7	0	0	
<b>RED BERTH (Tertiary)</b>	0	0	0	
<b>GREEN LAYDOWN (Primary)</b>	16	14	9	
<b>ORANGE LAYDOWN (Secondary)</b>	9	1	0	
<b>RED LAYDOWN (Tertiary)</b>	0	0	0	
<b>NUMBER OF BERTHING DELAYS</b>	2	11	4	
<b>NUMBER OF MACHINERY ISSUES/REQUESTS NOT MET</b>	0	0	0	

**NOVEMBER**

NUMBER	DATE	STEVE-DORE	VESSEL	VOYAGE	STARTING SHIFT	BERTH #	BERTH DELAY	LAYDOWN	MACHINERY REQUEST RECEIVED	MACHINERY REQUEST FILLED	MACHINERY ISSUES	NOTES
1	21/2330	QP	PENGUIN ARROW	2406	EVE	3	224HRS	NS, J & H	YES	YES	NIL	Awaiting departure of AAL Genoa
2	27/0700	LINX	ANNAMARIA	10B	DAY	2	88HRS	B	YES	YES	NIL	Awaiting departure of Sun Unity
3	30/0730	QP	VIKING PASSAMA	2472	DAY	1	16HRS	A	YES	YES	NIL	Awaiting departure of Turandot
4	28/0030	TML	BRIO FAITH		EVE	2	104HRS	B	YES	YES	NIL	Awaiting departure of Annamaria
5	31/0900	QP	TONSBERG	NZ404	DAY	1	16HRS	A	YES	YES	NIL	Awaiting departure of Viking Passama
6	01/0030	QP	SUNSHINE ACE	112	DAY	GB	24HRS	C	YES	YES	NIL	Awaiting departure of Trans Future 5
7	30/0900	LINX	OT IDEAAAL	51	DAY	2	88HRS	B	YES	YES	NIL	Awaiting departure of Brio Faith
8	03/0600	LINX	CATTLEYA ACE	97	EVE	GB	NIL	A & C	YES	YES	NIL	
9	01/0200	LINX	RHEA LEADER	127	EVE	1	80HRS	A, C & D	YES	YES	NIL	Awaiting departure of Tonsberg
10	02/AM	TML	ARKADIA	2424N	EVE	2	49HRS	B	YES	YES	NIL	Awaiting departure of OT Ideaal
11	06/1130	TML	HIGHLAND CHIEF	2424N	EVE	2	NIL	B	YES	YES	NIL	
12	03/1600	QP	VIKING OCEAN	16	MID	1	72HRS	A	YES	YES	NIL	Awaiting departure of Rhea Leader
13	30/2359	LINX	GREAT AGILITY	2406	DAY	2	168HRS	F2 & NTP	YES	YES	NIL	Awaiting departure of Highland Chief
14	05/0630	QP	GLOVIS CRYSTAL	1	DAY	1	88HRS	A, C & M	YES	YES	NIL	Awaiting departure of Viking Ocean
15	06/0800	LINX	MERCURY LEADER	64	MID	1	80HRS	C, D & M	YES	YES	NIL	Awaiting departure of Glovis Crystal
16	02/1300	QP	BBC AFRICA	1061049	DAY	2	208HRS	OTP & F1	YES	YES	NIL	Awaiting departure of Great Agility
17	11/0515	LINX	TRANS FUTURE 7	156	MID	1	NIL	A & C	YES	YES	NIL	
18	31/1100	QP	AAL HONG KONG	24009	EVE	3	280HRS	OS, H, W, J, E & REEFER	YES	YES	NIL	Awaiting departure of Penguin Arrow
19	09/1430	TML	BBC OCEAN	232	DAY	2	80HRS	B	YES	YES	NIL	Awaiting departure of BBC Africa
20	11/1700	QP	VIKING CORAL	59	EVE	1	40HRS	A, C & D	YES	YES	NIL	Awaiting departure of Trans Future 7
21	13/0700	TML	BBC DIRECTION	230S	DAY	2	24HRS	B	YES	YES	NIL	Awaiting departure of BBC Ocean
22	13/0830	QP	TORINO	NZ405	DAY	1	16HRS	A,M,B,WF1	YES	YES	NIL	Awaiting departure of Viking Coral
23	14/0001	QP	PRIMROSE ACE	156	DAY	1	72HRS	A & C	YES	YES	NIL	Awaiting departure of Torino
24	14/0600	LINX	BBC MARMARA	29	DAY	2	16HRS	B	YES	YES	NIL	Awaiting departure of BBC Direction
25	16/0300	LINX	CSAV RIO NEVADO		DAY	GB	NIL	C	YES	YES	NIL	
26	14/1930	LINX	ANNAMARIA	11B	EVE	2	40HRS	B	YES	YES	NIL	Awaiting departure of BBC Marmara
27	13/1300	LINX	GENIUS HIGHWAY	75	DAY	1	80HRS	A,C,WF1 & B	YES	YES	NIL	Awaiting departure of Primrose Ace
28	16/0700	QP	PLEIADES SPIRIT	112	EVE	1	72HRS	A,C	YES	YES	NIL	Awaiting departure of Genius Highway
29	15/1530	LINX	OT IDEAAAL	51B	EVE	2	120HRS	B	YES	YES	NIL	Awaiting departure of Annamaria
30	07/0700	LINX	SWIFT ACE	134	DAY	2	NIL	C,M,GB, WF1	YES	YES	NIL	
31	21/2130	TML	NEW GUINEA CHIEF	2425N	DAY	2	NIL	B	YES	YES	NIL	
32	23/0600	LINX	APHRODITE LEADER	50	EVE	1	NIL	A,M	YES	YES	NIL	
33	24/0100	TML	IVS MAGPIE	2401	DAY	2	NIL	OS,OTP	YES	YES	NIL	
34	17/0300	QP	ELEKTRA	EE420	EVE	1	176HRS	A, C & D	YES	YES	NIL	Awaiting departure of Aphrodite Leader
35	20/0830	QP	MORNING CHERRY	2473	DAY	1	160HRS	A & C	YES	YES	NIL	Awaiting departure of Elektra
36	27/1000	TML	ARKADIA	2426N	EVE	2	NIL	B	YES	YES	NIL	
37	22/0200	LINX	GLOVIS CHORUS	80	MID	1	160HRS	C & D	YES	YES	NIL	Awaiting departure of Morning Cherry
38	27/2100	TML	BRIO FAITH		MID	2	16HRS	NTP	YES	YES	NIL	Awaiting departure of Arkadia
39	25/0900	QP	GRACIOUS ACE	102	MID	1	104HRS	A	YES	YES	NIL	Awaiting departure of Glovis Chorus

**Legend - Berth # and Laydown**

	Primary
	Secondary
	Tertiary

SUMMARY	LINX	QUBE	TML	COMMENT
<b>TOTAL VESSELS FOR MONTH</b>				QUBE PIA ISSUES
<b>GREEN BERTH (Primary)</b>	13	14	9	
<b>ORANGE BERTH (Secondary)</b>	2	1	0	
<b>RED BERTH (Tertiary)</b>	0	0	0	
<b>GREEN LAYDOWN (Primary)</b>	7	11	9	
<b>ORANGE LAYDOWN (Secondary)</b>	6	4	0	
<b>RED LAYDOWN (Tertiary)</b>	0	0	0	
<b>NUMBER OF BERTHING DELAYS</b>	10	15	5	
<b>NUMBER OF MACHINERY ISSUES/REQUESTS NOT MET</b>	0	0	0	

**DECEMBER**

NUMBER	DATE	STEVE-DORE	VESSEL	VOYAGE	STARTING SHIFT	BERTH #	BERTH DELAY	LAYDOWN	MACHINERY REQUEST RECEIVED	MACHINERY REQUEST FILLED	MACHINERY ISSUES	NOTES
1	20/1530	QP	STAR KIRKENES	2407	DAY	3	64HRS	NS, H,NS, J	YES	YES	NIL	Awaiting departure of AAI Hong Kong
2	25/0800	LINX	TRANS FUTURE 6	155	DAY	1	112HRS	A, C & D	YES	YES	NIL	Awaiting departure of Gracious Ace
3	18/0030	LINX	DUGONG ACE	51	EVE	1	48HRS	A, C & M	YES	YES	NIL	Awaiting departure of Trans Future 6
4	27/1600	LINX	HOEGH TARGET	54	EVE	1	136HRS	A & C	YES	YES	NIL	Awaiting departure of Dugong Ace
5	04/0900	TML	HIGHLAND CHIEF	2426N	EVE	2	NIL	B	YES	YES	NIL	
6	28/0400	LINX	HOEGH BERLIN	128	EVE	3	152HRS	E	YES	YES	NIL	Awaiting departure of Star Kirkenes
7	28/0500	LINX	EQUULEUS LEADER	50	MID	1	160HRS	A & C	YES	YES	NIL	Awaiting departure of Hoegh Target
8	02/1930	LINX	KARIYUSHI LEADER	78	MID	1	72HRS	A & D	YES	YES	NIL	Awaiting departure of Equuleus Leader
9	03/0900	TML	BBC OCEAN	233	MID	2	56HRS	B	YES	YES	NIL	Awaiting departure of Highland Chief
10	03/2000	QP	AAL GALVESTON		EVE	3	56HRS	UH	YES	YES	NIL	Awaiting departure of Hoegh Berlin
11	02/0100	LINX	AMERICAN HIGHWAY	218	DAY	1	120HRS	A & C	YES	YES	NIL	Awaiting departure of Kariyushi Leader
12	03/1100	TML	NORFOLK	010W/012E	EVE	2	96HRS	B	YES	YES	NIL	Awaiting departure of BBC Ocean
13	05/0100	LINX	ANNAMARIA	12B	DAY	2	72HRS	B	YES	YES	NIL	Awaiting departure of Norfolk
14	06/1500	QP	PAGANELLA	2474	DAY	1	NIL	A, C & D	YES	YES	NIL	
15	08/1200	QP	SERENITY HIGHWAY	8	EVE	1	48HRS	A, C & M	YES	YES	NIL	Awaiting departure of Paganella
16	09/0600	LINX	TRANS FUTURE 5	157	DAY	3	40HRS	E & M	YES	YES	NIL	Awaiting departure of AAL Galveston
17	11/1500	TML	NPDL TAHITI	2425S/2427N	EVE	2	NIL	B	YES	YES	NIL	
18	09/1000	QP	GLOBAL HIGHWAY	68	MID	1	56HRS	A, C & D	YES	YES	NIL	Awaiting departure of Serenity Highway
19	06/1100	LINX	BBC MARMARA	30	EVE	2	136HRS	B	YES	YES	NIL	Awaiting departure of NPDL Tahiti
20	10/0600	QP	KITE ARROW	2407	EVE	3	48HRS	NS & J	YES	YES	NIL	Awaiting departure of Trans Future 5
21	11/0900	LINX	OT IDEEAL	52B	DAY	2	64HRS	B	YES	YES	NIL	Awaiting departure of BBC Marmara
22	11/1400	LINX	RHEA LEADER	128	DAY	1	80HRS	A, C & D	YES	YES	NIL	Awaiting departure of Tosca
23	14/0600	LINX	SUN UNITY		DAY	2	48HRS	OTP & WF2	YES	YES	NIL	Awaiting departure of OT Ideeal
24	10/1230	QP	TOSCA	EF418	DAY	1	NIL	C	YES	YES	NIL	
25	18/0850	LINX	GRAND QUEST	24GQ08	DAY	1	24HRS	A	YES	YES	NIL	Awaiting departure of Tosca
26	13/2200	LINX	EUPHONY ACE	153	DAY	1	136HRS	A & C	YES	YES	NIL	Awaiting departure of Grand Quest
27	17/0700	QP	WISDOM ACE	90	DAY	3	40HRS	F & D	YES	YES	NIL	Awaiting departure of Kite Arrow
28	19/0230	LINX	VICTORY RAY	4	MID	3	40HRS	M	YES	YES	NIL	Awaiting departure of Wisdom Ace
29	16/0200	QP	ARGUS RAY	1	DAY	1	112HRS	A, C & D	YES	YES	NIL	Awaiting departure of Euphony Ace
30	20/0945	TML	GREAT VANGUARD		DAY	3	16HRS	J, NS, OS & TP	YES	YES	NIL	Awaiting departure of Victory Ray
31	22/0130	TML	NEW GUINEA CHIEF	2425S/2501N	DAY	2	NIL	B	YES	YES	NIL	
32	20/1700	LINX	GRAND DOLPHIN	23	MID	3	72HRS	E & F	YES	YES	NIL	Awaiting departure of Great Vanguard
33	21/0500	LINX	GREEN OCEAN	10	DAY	1	72HRS	A & M	YES	YES	NIL	Awaiting departure of Argus Ray
34	24/1000	TML	BRIO FAITH	204	DAY	2	48HRS	TP & B	YES	YES	NIL	Christmas Day Port Closure
35	18/1300	QP	TORTUGAS	EF419	DAY	3	176HRS	E & NS	YES	YES	NIL	Awaiting departure of Brio Faith
36	26/0300	TML	ARKADIA	2426S/2501N	MID	2	16HRS	B	YES	YES	NIL	Christmas Day Port Closure
37	23/0630	LINX	TRANS FUTURE 7	157	DAY	1	112 HRS	C & D	YES	YES	NIL	Awaiting departure of Green Ocean
38	25/0800	LINX	ANNAMARIA	13B	DAY	2	64 HRS	B	YES	YES	NIL	Awaiting departure of Arkadia
39	29/1000	LINX	HOEGH AURORA	2	DAY	1	8 HRS	A & C	YES	YES	NIL	Awaiting departure of Tortugas then change

**Legend - Berth # and Laydown**

	Primary
	Secondary
	Tertiary

SUMMARY	LINX	QUBE	TML	COMMENT
<b>TOTAL VESSELS FOR MONTH</b>				QUBE PIA ISSUES
<b>GREEN BERTH (Primary)</b>	21	10	8	
<b>ORANGE BERTH (Secondary)</b>	0	0	0	
<b>RED BERTH (Tertiary)</b>	0	0	0	
<b>GREEN LAYDOWN (Primary)</b>	13	5	8	
<b>ORANGE LAYDOWN (Secondary)</b>	8	5	0	
<b>RED LAYDOWN (Tertiary)</b>	0	0	0	
<b>NUMBER OF BERTHING DELAYS</b>	21	8	5	
<b>NUMBER OF MACHINERY ISSUES/REQUESTS NOT MET</b>	0	0	0	

Attachment A

## **KPI 6**

Allocation of first point of rest

Appleton Dock

Jul 1 – Dec 31, 2024



APD July

NUMBER	ETA	STEVEDORE	VESSEL	VOYAGE	STARTING SHIFT	BERTH #	BERTH DELAY	LAYDOWN	MACHINERY REQUEST RECEIVED	MACHINERY REQUEST FILLED	MACHINERY ISSUES	NOTES
1	6/07/2024	QUBE	BBC RAISE	v1282038	DAY	E	N	E YARD	N/A	N/A	N	18 BBLK UNITS
2	12/07/2024	QUBE	GOLDEN CENTURY	v2402	EVE	E	N	E YARD, E SHED	N/A	N/A	N	1248 STEEL CARGOES
3	18/07/2024	LINX	CSAV RIO NEVADO	v24RN4A	DAY	D	N	A YARD, C PAD	N/A	N/A	N	726 VEHICLES
4	22/07/2024	LINX	GLOVIS CROWN	v003	DAY	D	N	B PAD, C PAD, D SHED, A SHED	N/A	N/A	N	1339 VEHICLES, 2 RORO
5	24/07/2024	QUBE	AUDREY SW	v2401	DAY	E	N	E YARD, E SHED	N/A	N/A	N	1884 STEEL CARGOES
6	12/07/2024	LINX	GRANDE BALTIMORA	v0324	DAY	B	N	B PAD	N/A	N/A	N	11 VEHICLES EXPORT

TOTAL VESSELS FOR MONTH	3	3
NUMBER OF BERTHING DELAYS	0	0
NUMBER OF MACHINERY ISSUES/REQUESTS NOT MET	0	0

PD Aug 2024

NUMBER	ETA	STEVEDORE	VESSEL	VOYAGE	STARTING SHIFT	BERTH #	BERTH DELAY	LAYDOWN	MACHINERY REQUEST RECEIVED	MACHINERY REQUEST FILLED	MACHINERY ISSUES	NOTES
1	4/08/2024	QUBE	WEAVER ARROW	v2403	EVE	D	N	D SHED	N/A	N/A	N	4537 STEEL CARGOES
2	13/08/2024	QUBE	AAL HONG KONG	v24007	EVE	C	N	C PAD, A YARD, A SHED	N/A	N/A	N	1552 BBLK (WGTP) & STEEL CARGOES
3	15/08/2024	QUBE	AAL FREMANTLE	v24008	DAY	E	N	E YARD	N/A	N/A	N	1096 STEEL CARGOES, 49 STEEL T/SHIP
4	24/08/2024	QUBE	SEA PEARL	v2401	EVE	D	N	D SHED	N/A	N/A	N	2728 STEEL CARGOES
5	25/08/2024	QUBE	BUNUN LEADER	v2401	DAY	E	N	E YARD, E SHED	N/A	N/A	N	1394 STEEL CARGOES

TOTAL VESSELS FOR MONTH	QUBE	LNK
	5	0
NUMBER OF BERTHING DELAYS	0	0
NUMBER OF MACHINERY ISSUES/REQUESTS NOT MET	0	0

APD Sep

NUMBER	ETA	STEVEDORE	VESSEL	VOYAGE	STARTING SHIFT	BERTH #	BERTH DELAY	LAYDOWN	MACHINERY REQUEST RECEIVED	MACHINERY REQUEST FILLED	MACHINERY ISSUES	NOTES
1	6/09/2024	QUBE	AAL BANGKOK	v24008	DAY	E	N	E YARD, E SHED	N/A	N/A	N	1224 BBLK & STEEL CARGOES
2	6/09/2024	QUBE	GREBE ARROW	v2404	DAY	D	N	D SHED, A SHED	N/A	N/A	N	2844 STEEL CARGOES
3	11/09/2024	QUBE	AAL SHANGHAI	v24008	NIGHT	C	N	C PAD, A YARD, A SHED	N/A	N/A	N	923 BBLK (WGTP) & STEEL CARGOES
4	12/09/2024	QUBE	IZANAGI HARMONY	v2402	EVE	E	N	E SHED, E YARD	N/A	N/A	N	1396 STEEL CARGOES
5	24/09/2024	QUBE	MAASGRACHT	v2407	EVE	C	N	C PAD, A YARD	N/A	N/A	N	103 BBLK
6	25/09/2024	QUBE	AAL GENOA	v24005	DAY	B	N	B PAD	N/A	N/A	N	812 STEEL CARGOES

<b>TOTAL VESSELS FOR MONTH</b>	<b>QUBE</b>	<b>LINX</b>
<b>NUMBER OF BERTHING DELAYS</b>	6	0
<b>NUMBER OF MACHINERY ISSUES/REQUESTS NOT MET</b>	0	0

APD OCT 2024

NUMBER	ETA	STEVEDORE	VESSEL	VOYAGE	STARTING SHIFT	BERTH #	BERTH DELAY	LAYDOWN	MACHINERY REQUEST RECEIVED	MACHINERY REQUEST FILLED	MACHINERY ISSUES	NOTES	
1	30/09/2024	QUBE	FLOAGRACHT	v2406	EVE	E	N	E YARD	N/A	N/A	N	511 BBLK	
2	3/10/2024	QUBE	FLOVER ARROW	v2405	EVE	E	N	E SHED, E YARD	N/A	N/A	N	5166 STEEL CARGOES	
3	14/10/2024	QUBE	GREAT VANGUARD	v2407	NIGHT	B	N	B PAD, C PAD, A YARD	N/A	N/A	N	2668 BBLK & STEEL CARGOES, 58 CONTAINERS	
4	18/10/2024	QUBE	AAL HONG KONG	v24009	DAY	C	N	C PAD, A YARD, A SHED	N/A	N/A	N	1300 BBLK & STEEL CARGOES, 2 CONTAINERS	
5	22/10/2024	QUBE	MANDARIN ARROW	v2406	DAY	D	N	D SHED, E YARD	N/A	N/A	N	4100 STEEL CARGOES	
6	22/10/2024	QUBE	AAL BANGKOK	v24010	EVE	B	N	B PAD, A YARD	N/A	N/A	N	93 BBLK (WGTP), 96 CONTAINERS	
										<b>QUBE</b>	<b>LINX</b>		
										TOTAL VESSELS FOR MONTH	6	0	
										NUMBER OF BERTHING DELAYS	0	0	
										NUMBER OF MACHINERY ISSUES/REQUESTS NOT MET	0	0	

IPD Oct 2024

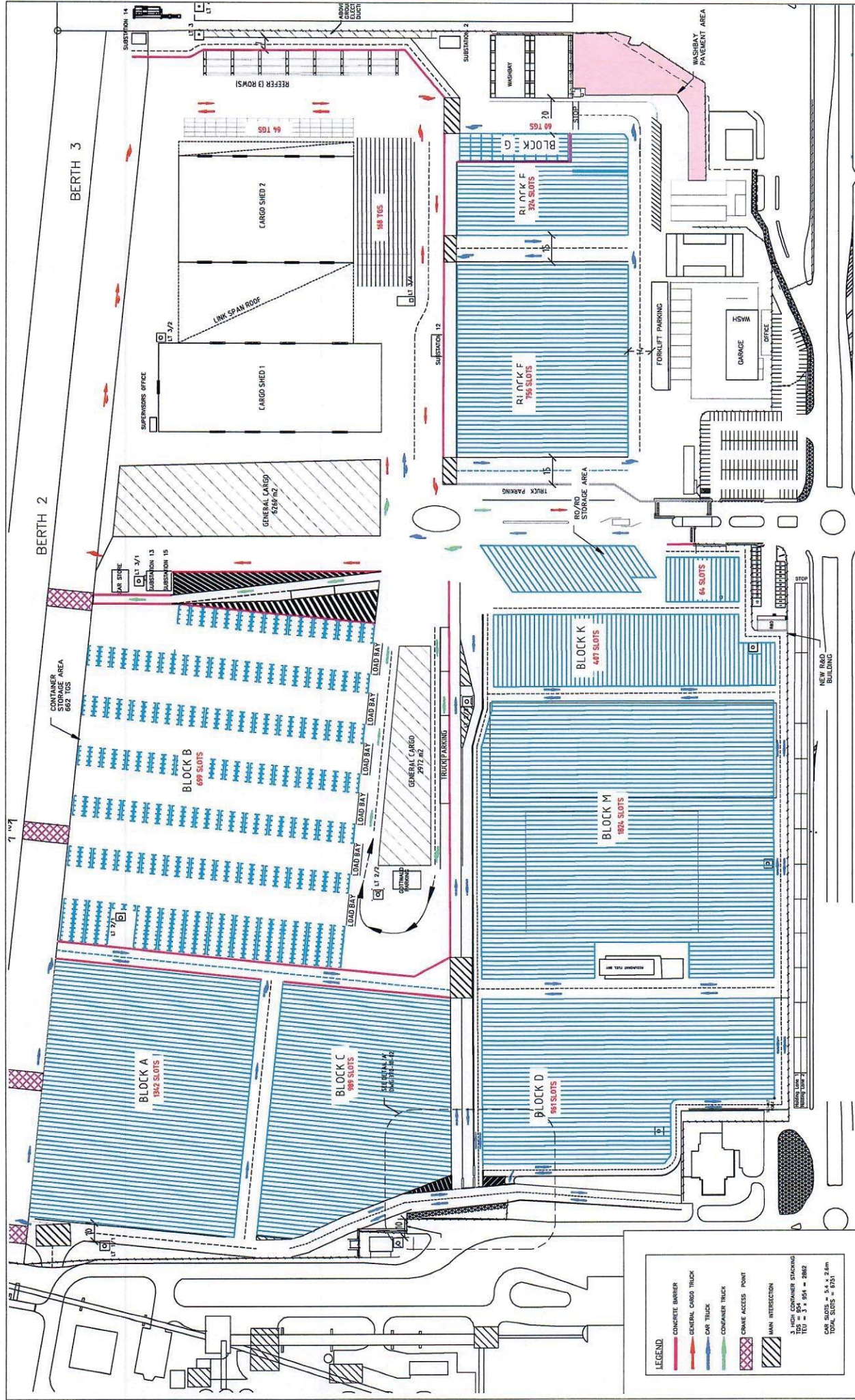
NUMBER	ETA	STEVEDORE	VESSEL	VOYAGE	STARTING SHIFT	BERTH #	BERTH DELAY	LAYDOWN	MACHINERY REQUEST RECEIVED	MACHINERY REQUEST FILLED	MACHINERY ISSUES	NOTES	
1	6/11/2024	QUBE	BLUE BALISTER	v2401S	DAY	E	N	E YARD, E SHED	N/A	N/A	N	2238 STEEL CARGOES	
2	9/11/2024	QUBE	MINERVAGRACHT	v2407	DAY	C	N	B PAD, A YARD	N/A	N/A	N	6692 BBLK & STEEL CARGOES	
3	12/11/2024	QUBE	SHANGHAI SPIRIT	v2409	DAY	D	N	C PAD	N/A	N/A	N	2286 STEEL D BAR	
4	20/11/2024	QUBE	AAL SHANGHAI	v24010	EVE	C	N	C PAD, A YARD, A SHED, D SHED, F YARD	N/A	N/A	N	1841 BBLK (WOTP) & STEEL CARGOES, 29 CONTAINERS	
5	29/11/2024	QUBE	PENGUIN ARROW	v2406	DAY	D	N	D SHED, E YARD	N/A	N/A	N	1871 STEEL CARGOES	
										QUBE	LINX		
										TOTAL VESSELS FOR MONTH	5	0	
										NUMBER OF BERTHING DELAYS	0	0	
										NUMBER OF MACHINERY ISSUES/REQUESTS NOT MET	0	0	

APD Dec 2024

NUMBER	ETA	STEVEDORE	VESSEL	VOYAGE	STARTING SHIFT	BERTH #	BERTH DELAY	LAYDOWN	MACHINERY REQUEST RECEIVED	MACHINERY REQUEST FILLED	MACHINERY ISSUES	NOTES
1	5/12/2024	QUBE	KLAUS	v2408	DAY	E	N	DIRECT TO TRUCK	N/A	N/A	N	33 BBLK DTT
2	11/12/2024	QUBE	STAR KIRKENESS	v2407	EVE	E	N	E YARD, E SHED, D SHED	N/A	N/A	N	4168 STEEL CARGOES
3	13/12/2024	QUBE	IVS MAGPIE	v24010	EVE	C	N	C PAD, D SHED, A SHED	N/A	N/A	N	3093 STEEL CARGOES
4	19/12/2024	QUBE	KHARIS TRINITY	v2401	DAY	C	N	C PAD, B PAD, A YARD	N/A	N/A	N	4941 STEEL D BAR

TOTAL VESSELS FOR MONTH	4	0
NUMBER OF BERTHING DELAYS	0	0
NUMBER OF MACHINERY ISSUES/REQUESTS NOT MET	0	0

PART B – TERMINAL LAYOUT FISHERMAN ISLANDS, PORT KEMBLA & APPLETON DOCK

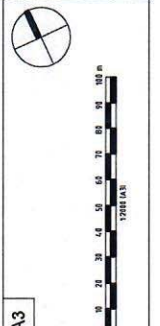


**LEGEND**

- CONCRETE BARRIER
- GENERAL CARGO TRUCK
- CAR TRUCK
- CONTAINER TRUCK
- CRANE ACCESS POINT
- MAIN INTERSECTION
- 3 HIGH CONTAINER STAGING  
 100 = 84 x 954 = 2862  
 100 = 84 x 954 = 2862  
 TOTAL SLOTS = 8751

Project: **AAT FISHERMAN ISLANDS TERMINAL**  
 Drawing Title: **C1 - LINEMARKING WORKS**  
 GENERAL ARRANGEMENT  
 STATUS: FOR INFORMATION  
 Project No. 370  
 Drawing No. 370-10-00  
 Rev. B

James Rose Consulting  
 ABN 64 175 064 511  
 Unit F2, 1-15 Bar Street  
 Brisbane QLD 4001  
 PH: 07 265 8559  
 FAX: 07 265 8559  
 mail@jamesrose.com.au  
 www.jamesrose.com.au

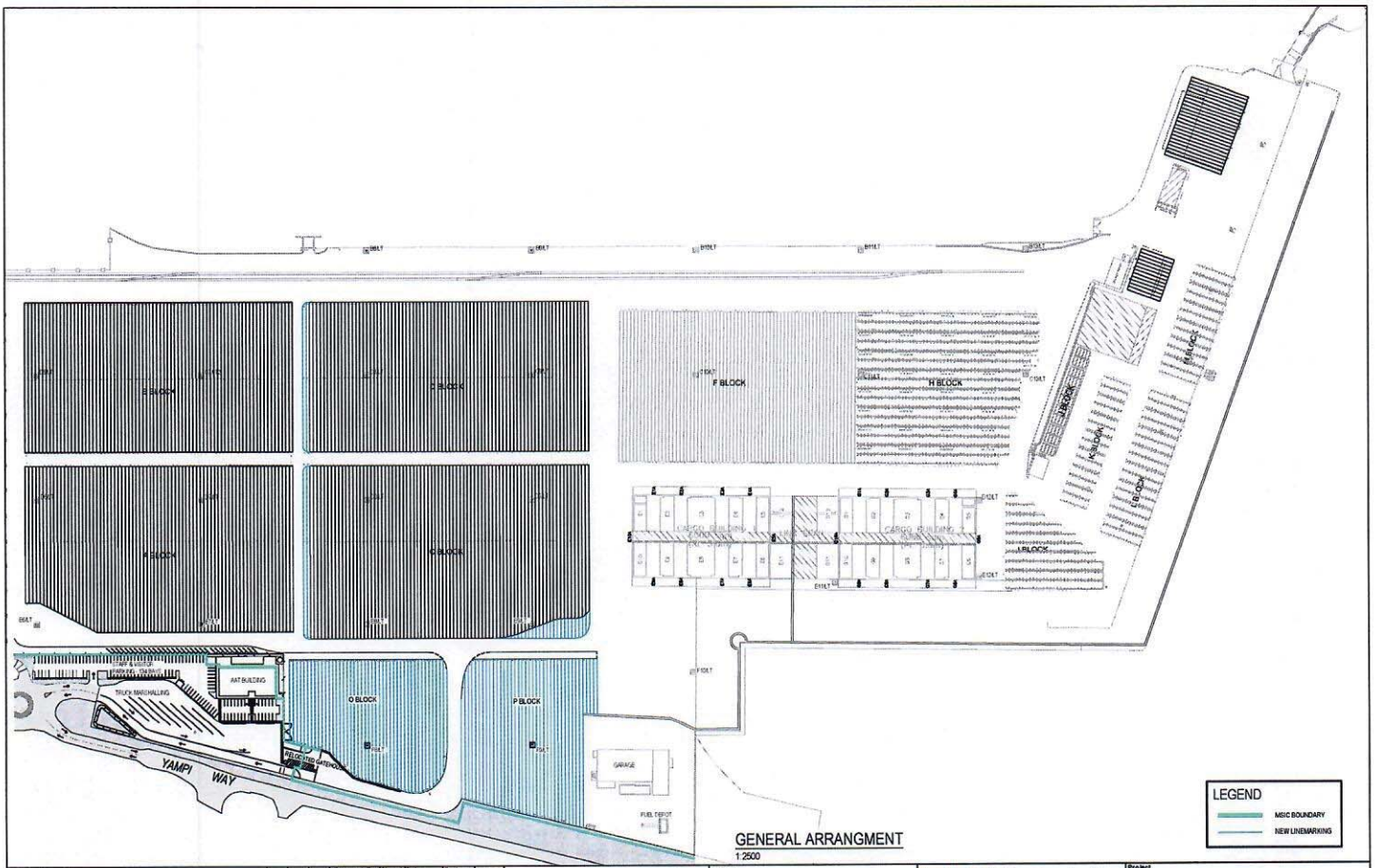


REV	DATE	BY	Ver.	App.	REVISION DETAILS
B	04/08/19	PL	DN	DM	BLOCK B AMENDED
A	20/05/19	PL	DN	DM	FOR INFORMATION

Prepared By	Signed	Date	Scale
PL	DN	04/08/19	1:2000
Verified By <td>Signed <td>Date <td></td> </td></td>	Signed <td>Date <td></td> </td>	Date <td></td>	
DN	DN	04/08/19	
Approved by <td>Signed <td>Date <td></td> </td></td>	Signed <td>Date <td></td> </td>	Date <td></td>	
DN	DN	04/08/19	
Horizontal <td>DN</td> <td></td> <td></td>	DN		
Vertical <td>DN</td> <td></td> <td></td>	DN		
Datum <td>DN</td> <td></td> <td></td>	DN		





**GENERAL ARRANGMENT**  
1:2500

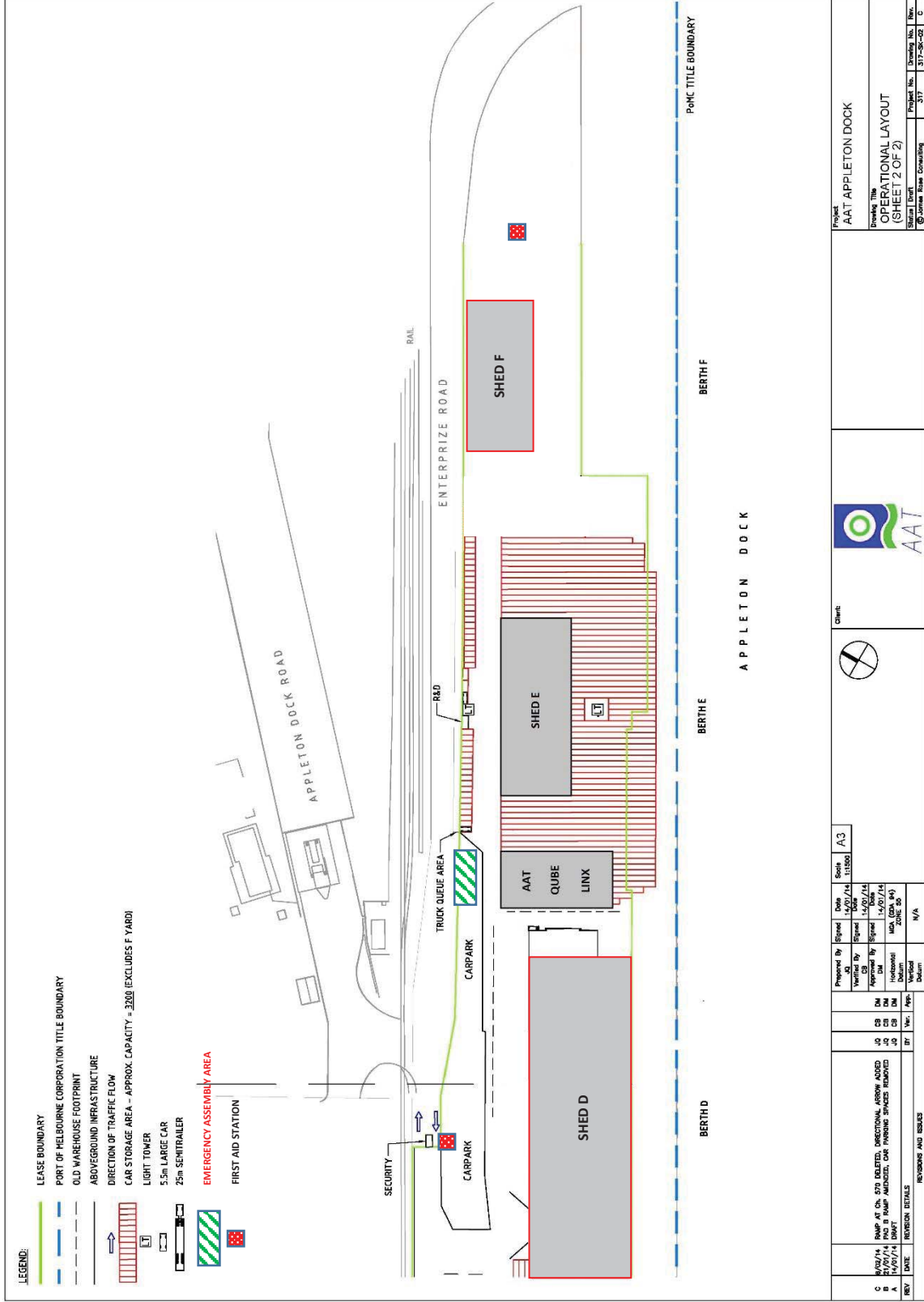
B 01/10/19 REVISION FOR CLIENT COMMENTS A 16/10/19 DRAFT FOR CLIENT REVIEW		PL DM DM PL DM DM	Prepared By PL Verified By DM Approved By DM Horizontal Datum N/A Vertical Datum AMD	Signed Date 01/10/19 Signed Date 01/10/19 Signed Date 01/10/19	Scale 1:2500 A3		Client: AAT Australian Associated Terminals	JRC James Rose Consulting ABN 64 175 064 511 Unit F21, 1-15 Barr Street SALAMAN NSW 2041 PH 02 9555 8598 FAX 02 9555 8599 mail@jamesrose.com.au www.jamesrose.com.au	Project AAT PORT KEMBLA TERMINAL REDEVELOPMENT Drawing Title GENERAL ARRANGEMENT Status: DRAFT Project No. 433 Drawing No. 433-C-01 Rev. E
---	--	----------------------	---	---	-----------------------	--	---	--	--

REV	DATE	REVISION DETAILS	BY	CHK	APP	Vertical Datum	Horizontal Datum	Signed Date	Verified Date	Scale	Sheet No.	Project No.	Drawing No.	Rev.
REVISIONS AND ISSUES														





# AAT APPLETON DOCK – SITE PLAN



**LEGEND:**

- LEASE BOUNDARY
- PORT OF HEBBOURNE CORPORATION TITLE BOUNDARY
- OLD WAREHOUSE FOOTPRINT
- ABOVEGROUND INFRASTRUCTURE
- DIRECTION OF TRAFFIC FLOW
- CAR STORAGE AREA – APPROX. CAPACITY = 3200 (EXCLUDES F YARD)
- LIGHT TOWER
- 5.5m L. LARGE CAR
- 25m SEMITRAILER
- EMERGENCY ASSEMBLY AREA
- FIRST AID STATION

<b>Project</b> AAT APPLETON DOCK		<b>Client</b> 	
<b>Drawn By</b> OPERATIONAL LAYOUT (SHEET 2 OF 2)		<b>Scale</b> 1:1000	
<b>Sheet No.</b> 317-04-02		<b>Drawn No.</b> 0	
<b>Project No.</b> 317-04-02		<b>Drawn No.</b> 0	
<b>Author</b> J. Brown		<b>Check</b> 	
<b>Project</b> AAT APPLETON DOCK		<b>Scale</b> A3	
<b>Drawn By</b> DM		<b>Checked By</b> DM	
<b>Verified By</b> DM		<b>Approved By</b> DM	
<b>Date</b> 1/10/14		<b>Date</b> 1/10/14	
<b>Horizontal</b> DM		<b>Vertical</b> DM	
<b>Revision</b> N/A		<b>Revision</b> N/A	
<b>REVISIONS AND ISSUES</b>		<b>REVISIONS AND ISSUES</b>	

## **PART C: TERMINAL USERS IN WHICH QUBE OR A QUBE RELATED ENTITY HAS AN INTEREST**

Qube or a Qube Related Entity has a direct or indirect interest greater than or equal to 20% in the following Terminal Users who provided Stevedoring Services or PDI Operator Services at the following Terminals during the period covered by this Compliance Report:

### **Port Kembla Terminal**

Qube Ports Pty Ltd ACN 123 021 492

Prixcar Services Pty Ltd ACN 007 063 505

### **Brisbane Terminal**

Qube Ports Pty Ltd ACN 123 021 492

Prixcar Services Pty Ltd ACN 007 063 505